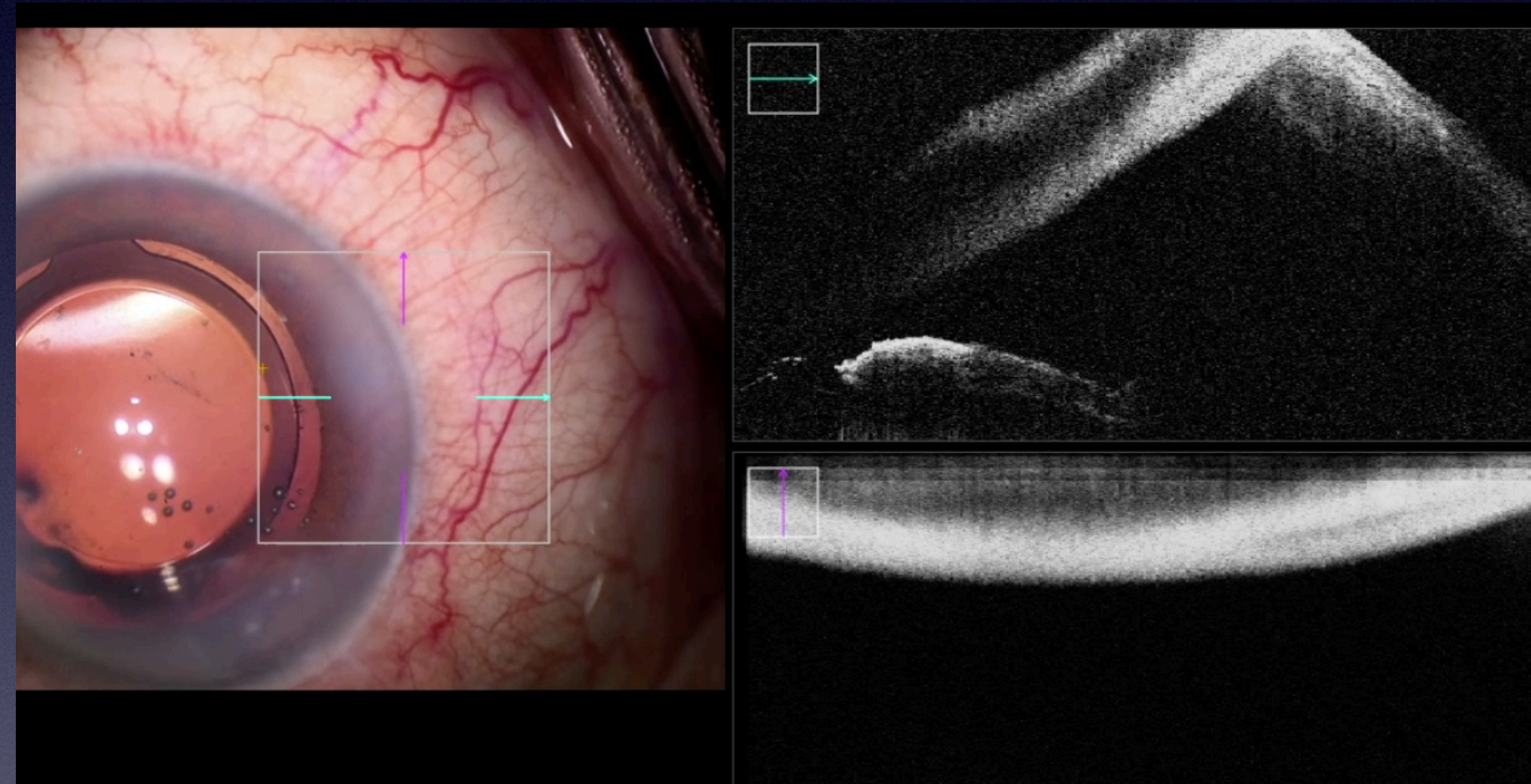


ANTERIOR CHAMBER DEPTH ANOMALIES

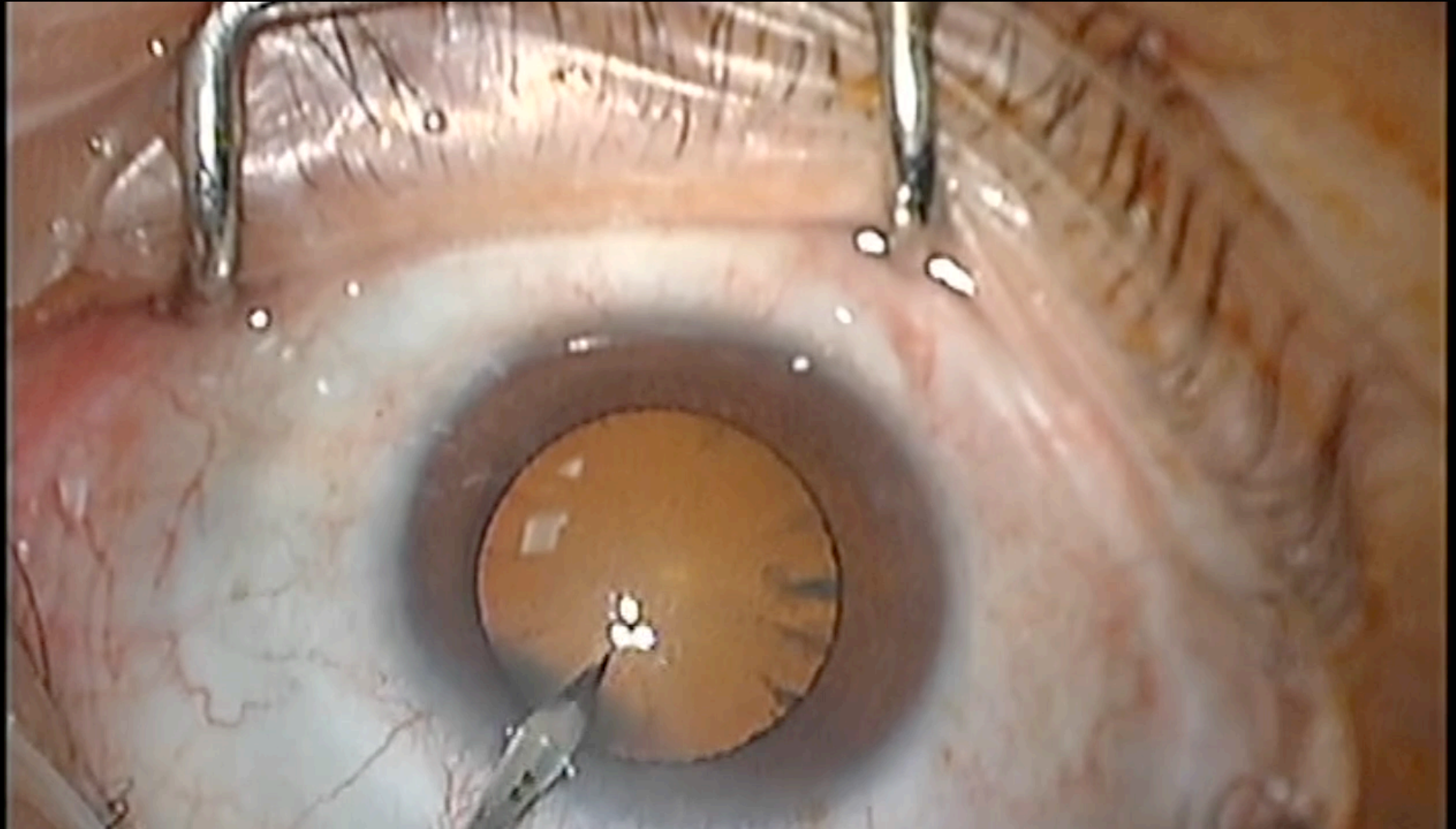


*MOSTAFA NABIH MD.
PROFESSOR CAIRO UNIVERSITY*

PROGRESSIVE DEEPENING

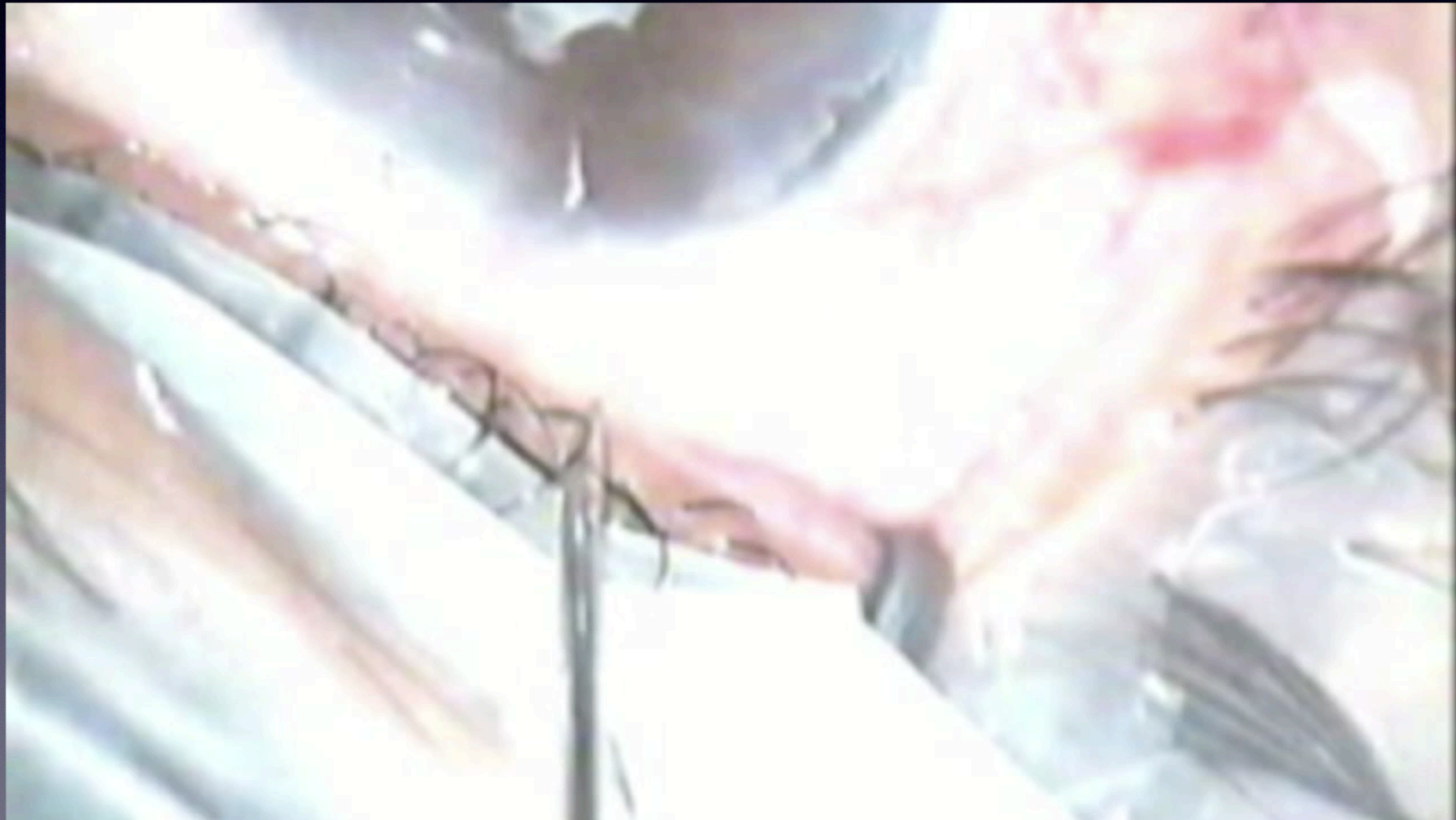


IRIDOCAPSULAR BLOCK



PROGRESSIVE SHALLOWNESS





MISDIRECTION OF FLUID

ZEISS

6.8x

50%
XENON

100:42

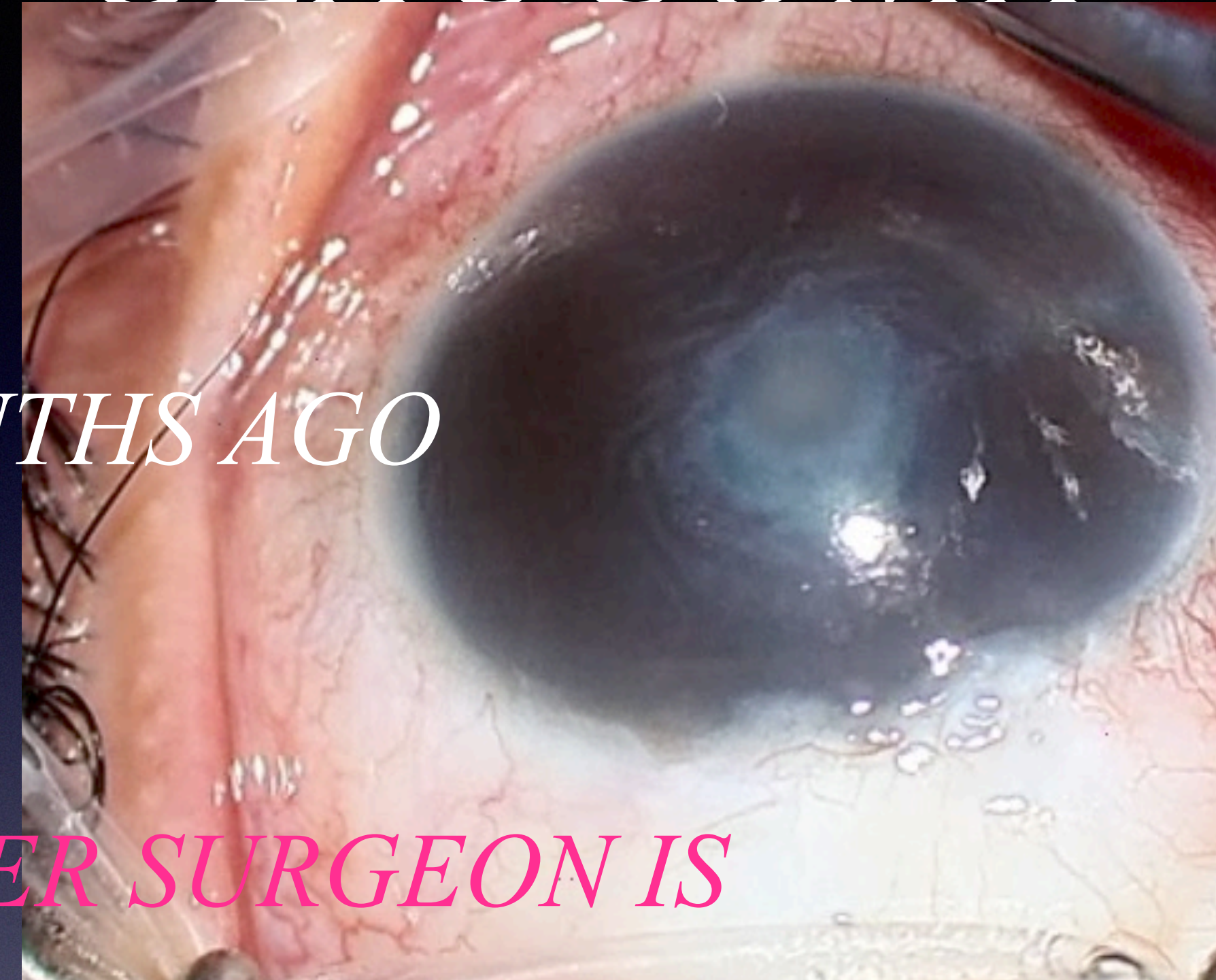
NONE

Dr. Mostafa Nabih
Anterior



NEGLECTED MALIGNANT GLAUCOMA

- *40 YEAR OLD LADY*
- *BILATERAL TRABECULECTOMY 20 MONTHS AGO*
- *RIGHT EYE SUCCESSFUL SURGERY*
- *STORMY HISTORY LEFT EYE TOLD BY HER SURGEON IS GOING TO BE OK !!!*
- *FLAT A .C. IRIDOLENTICULAR TOUCH OPAQUE CENTRE CORNEA.*
- *IOP 42 mmHg WITH ALL TOPICAL MEDICATIONS.*

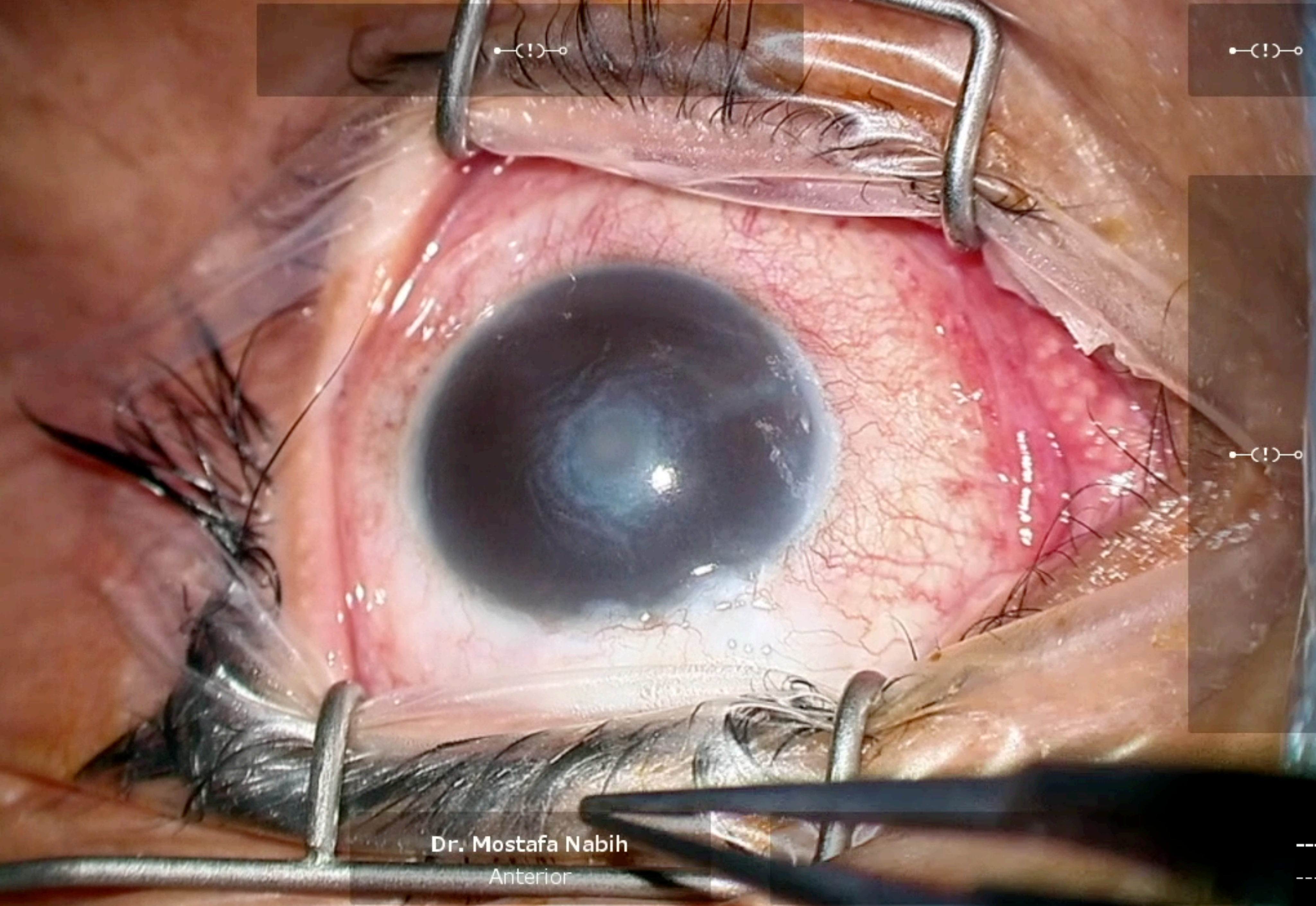


4.9x

56%
XENON

0:100

NONE



Dr. Mostafa Nabih
Anterior

A close-up photograph of a human eye during a surgical procedure. A white, curved surgical instrument is positioned over the eye. The eye's iris and pupil are visible, and there is a bright light source at the bottom of the frame. The background is dark and out of focus.

- *V.A 0.2*

- *IOP 18 WITH MED*