

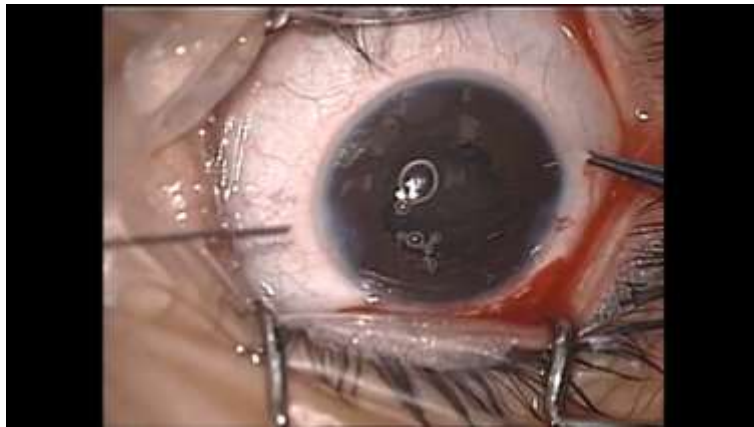
Four- Flanged Intrascleral IOL Implantation

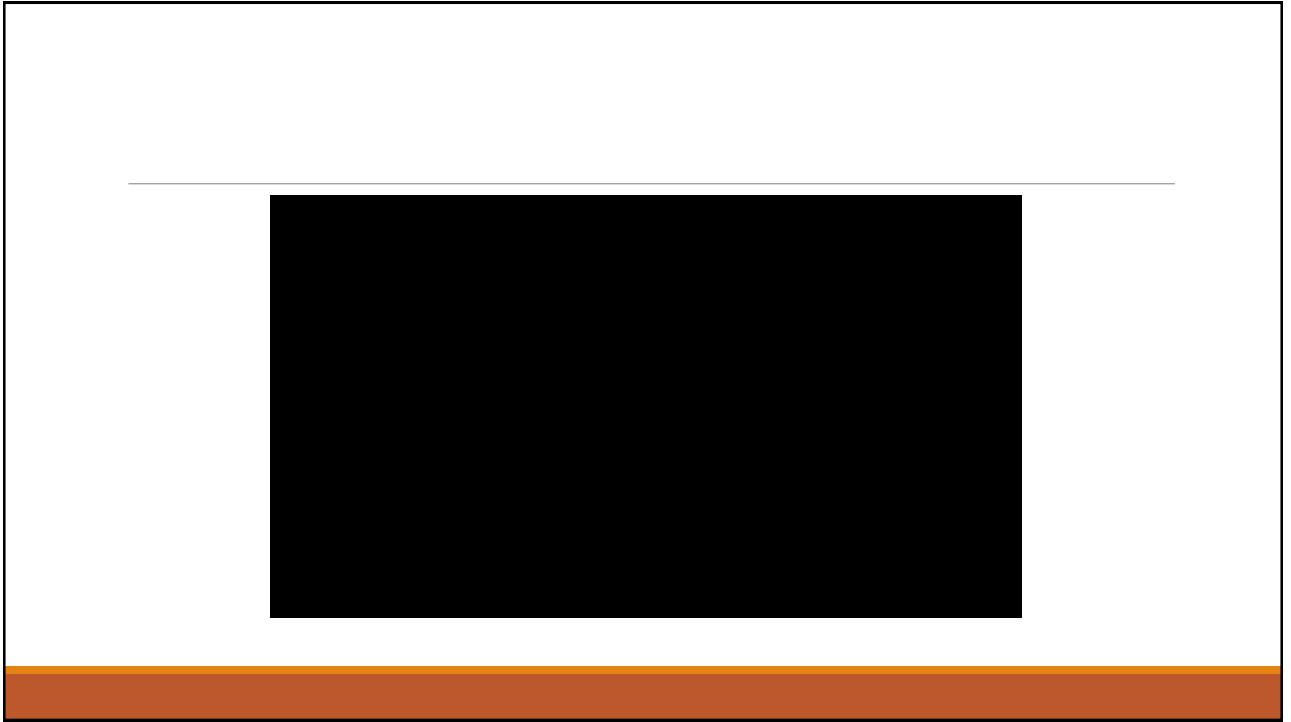
DR. LOBNA KHAZBAK
PROFESSOR OF OPHTHALMOLOGY
CAIRO UNIVERSITY

Material and instruments used:

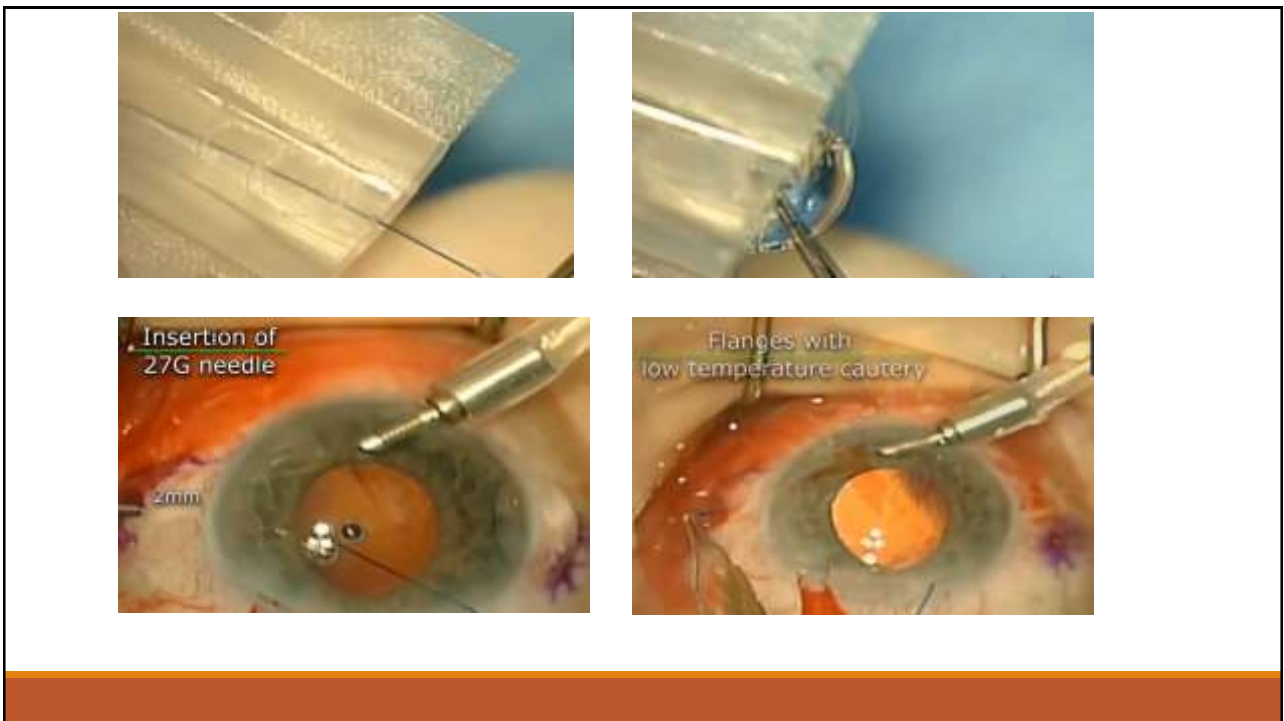
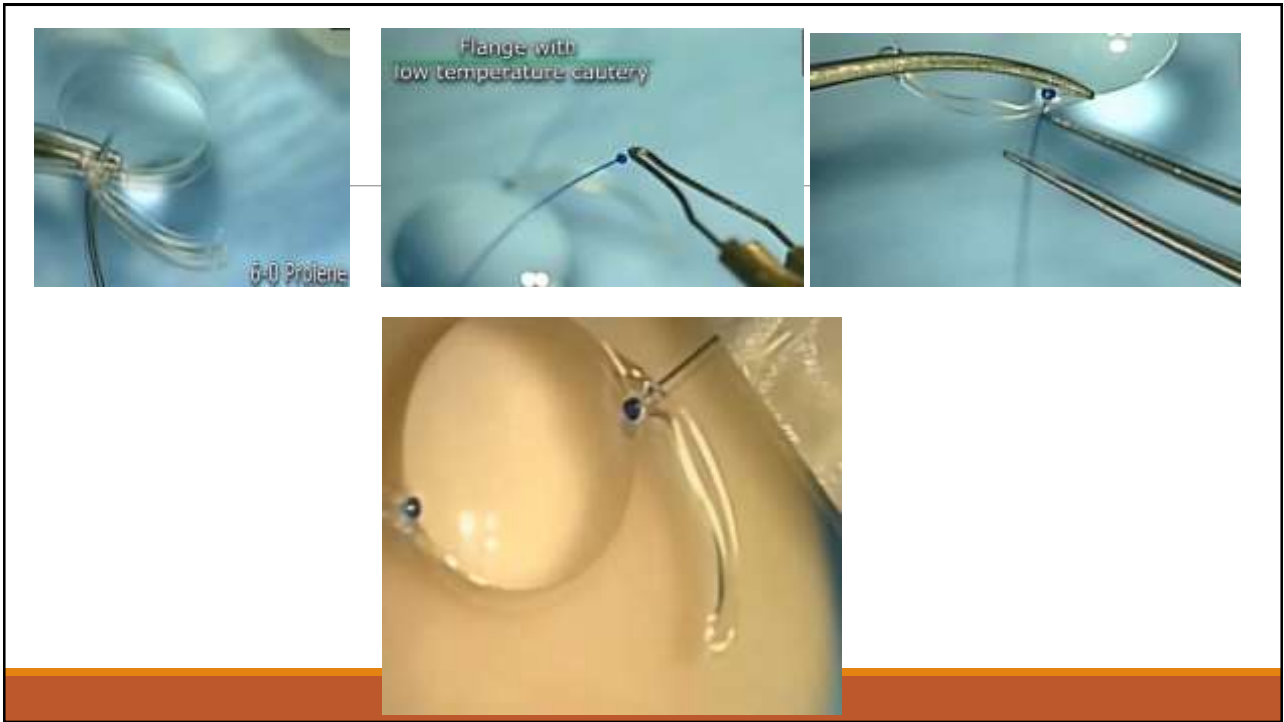
- IOL : PMMA lens, single piece foldable IOL, 3-piece foldable IOL, Akreos IOL
- 5-0 prolene, 6-0 prolene
- 26-guage needle, 27 or 30 gauge needle
- Folding IOL forceps or IOL injector
- Micro-forceps
- Anterior chamber maintainer or posterior chamber infusion

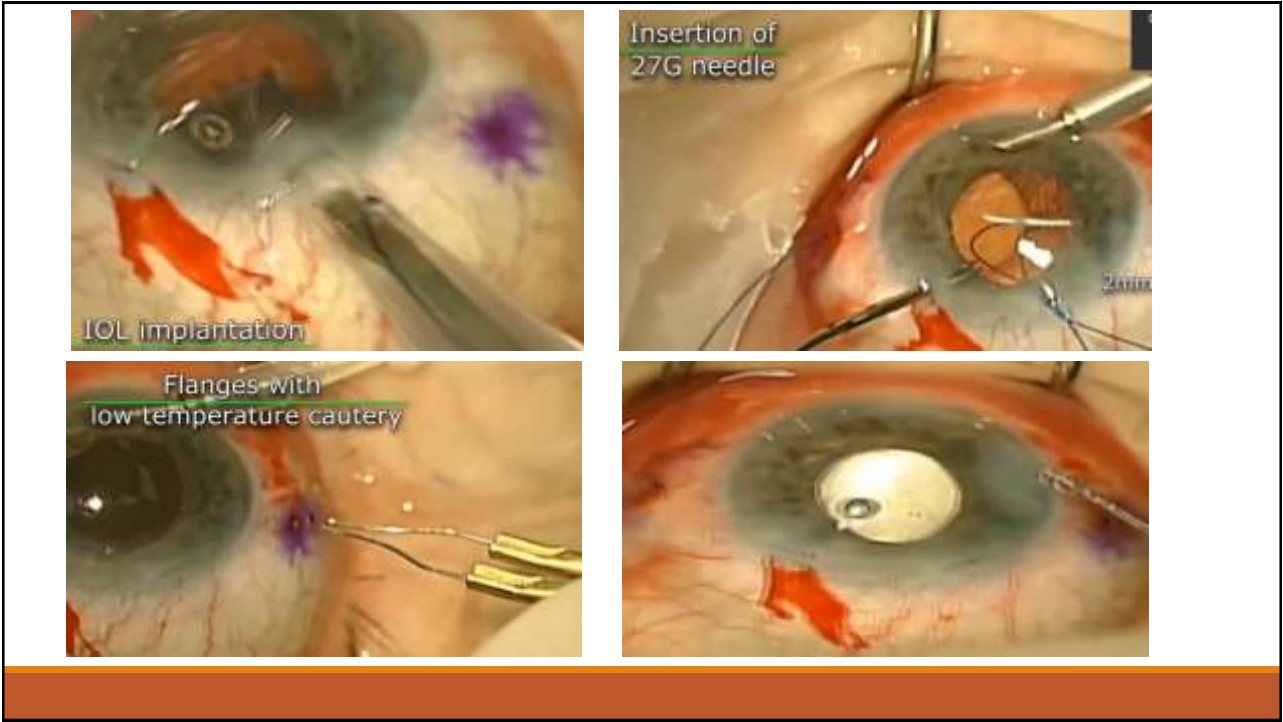
PMMA Lens



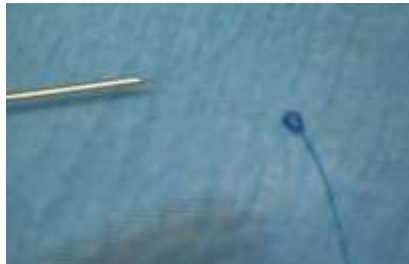


Single piece IOL





3-piece IOL





Loading the cartridge



Loading the cartridge

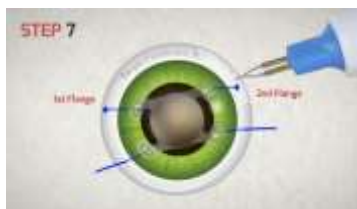
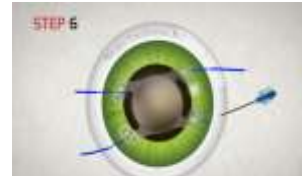
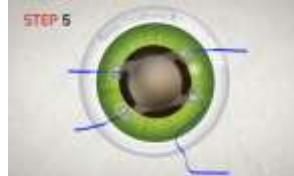


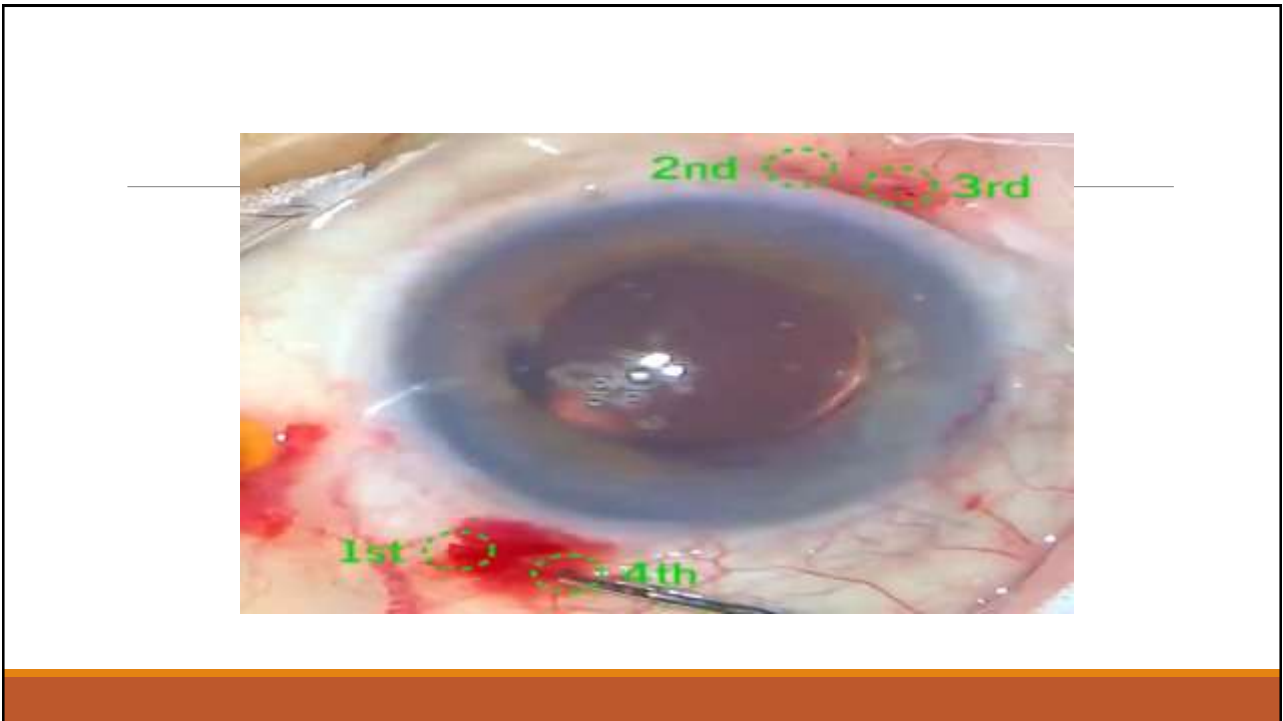
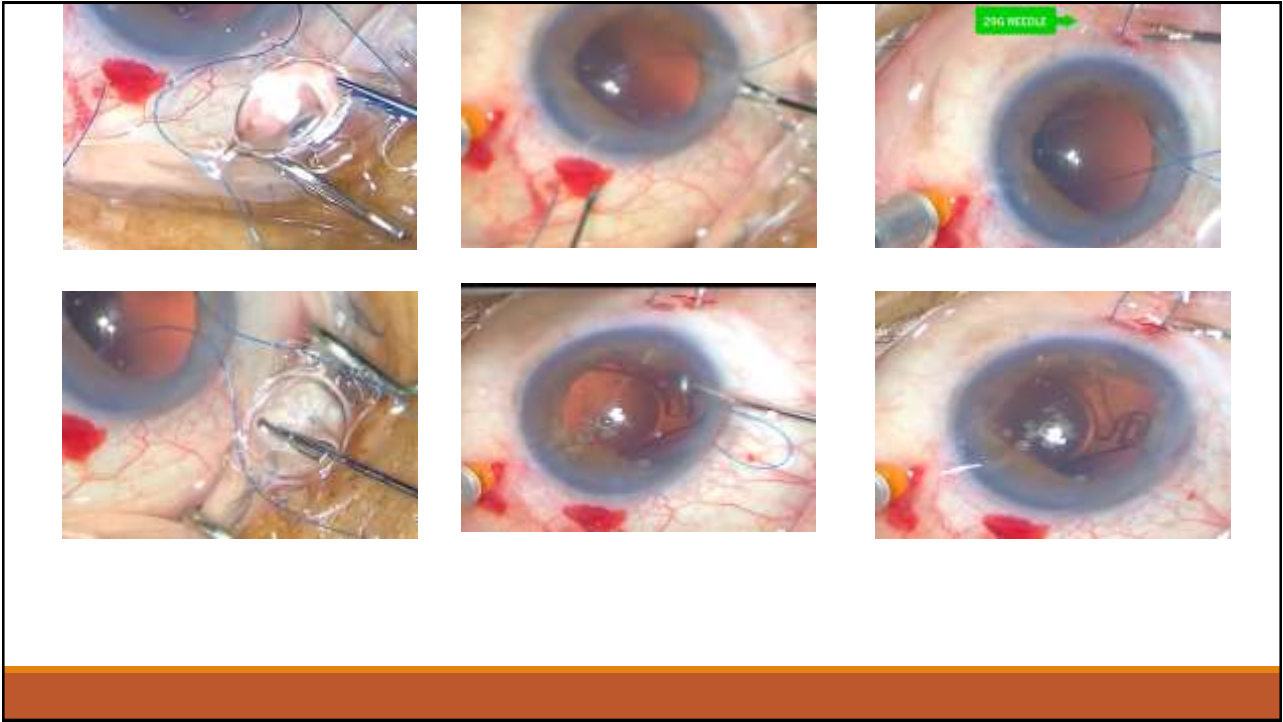
6-0 Prolene
fixate the haptic



IOL is
stable & centered

Akreos IOL





**THANK
YOU**