

# Stage 5 ROP: surgery and outcomes

**Ahmed Habib**, MD FRCS

Ass. Prof. Of ophthalmology, Ain Shams University

Vitreoretinal surgery consultant, AlMashreq Eye Center

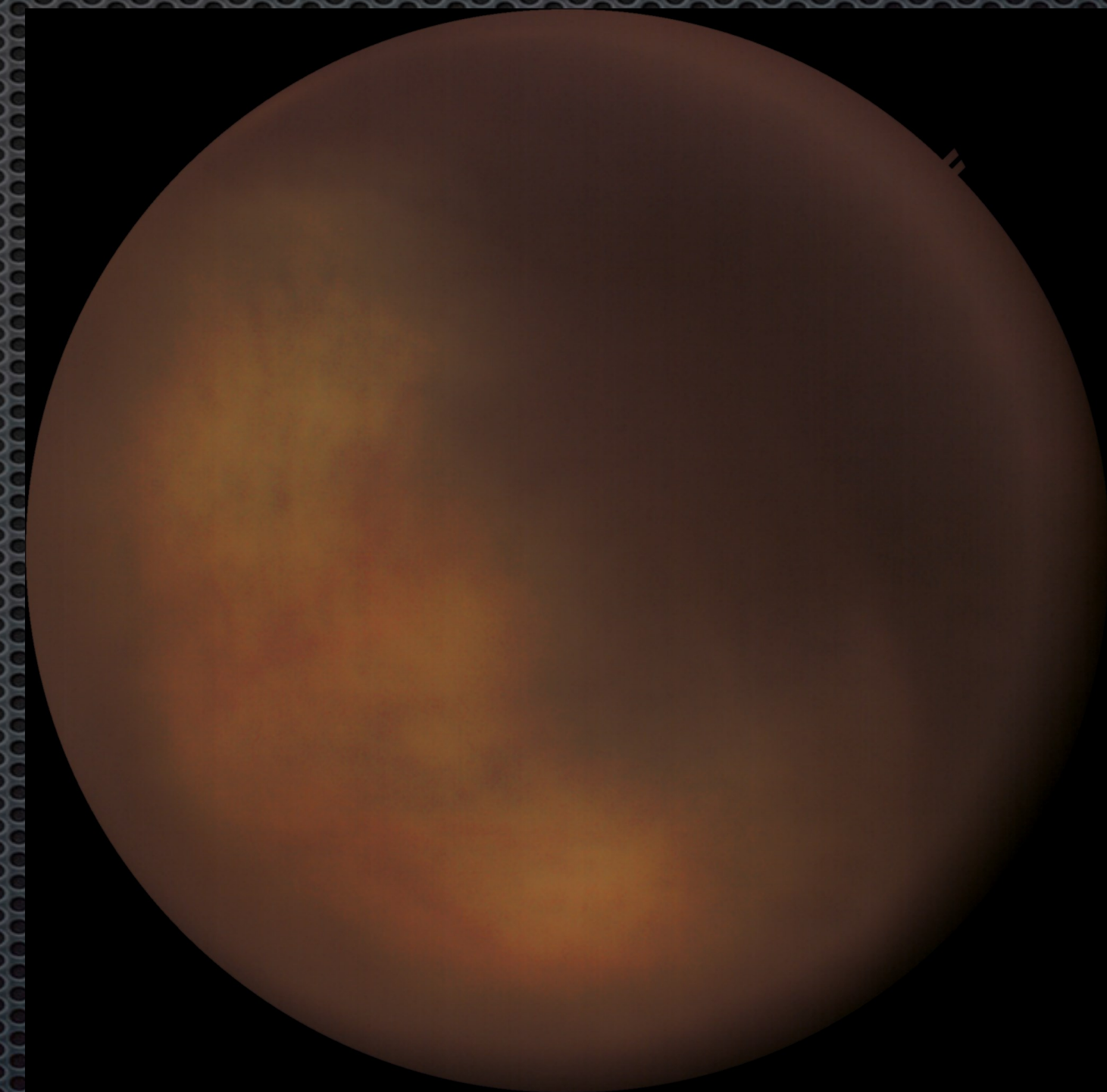
What does my baby need?  
What is the success rate?

# Counseling

- ✦ Tell the truth, the whole truth and nothing but the truth
- ✦ Arm yourself with evidence based data
- ✦ Point out the possible need for multiple surgeries
- ✦ Make it bleak but not hopeless
- ✦ Give your advice

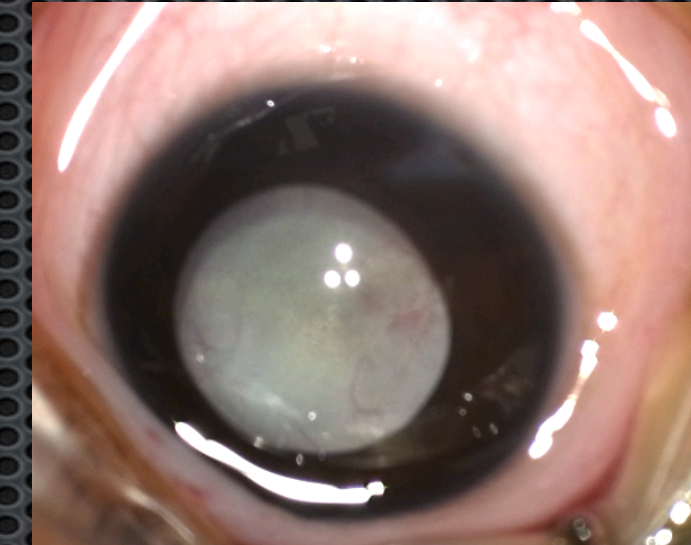
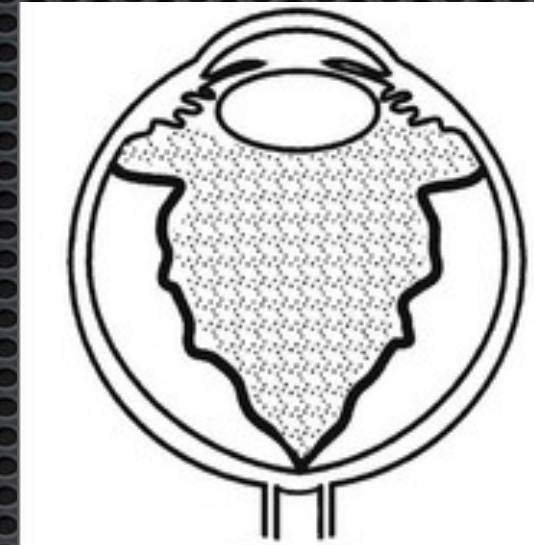
# Evidence based data

- Best reported results:
  - Anatomical: 30-35% retinal attachment, 65% failure/lost
  - Visual: 75% LP, 5% of those having form vision

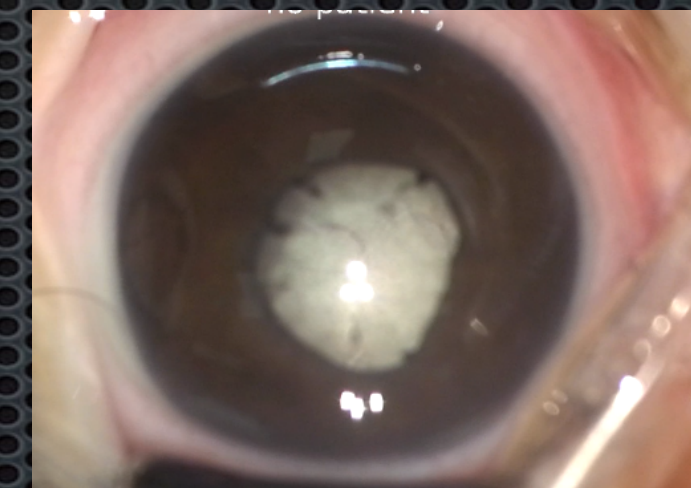
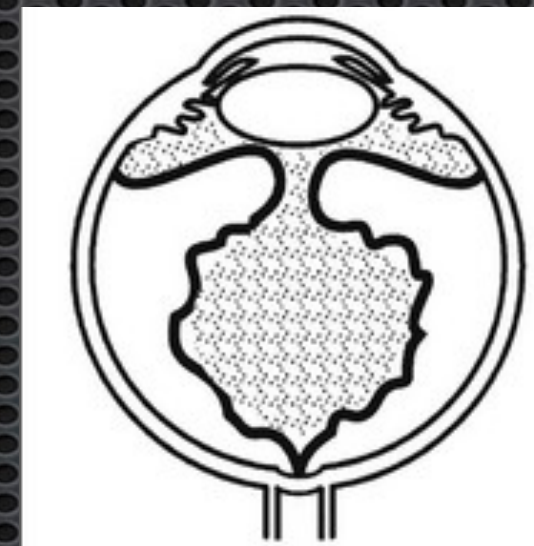


# Different severity levels of Stage 5 ROP

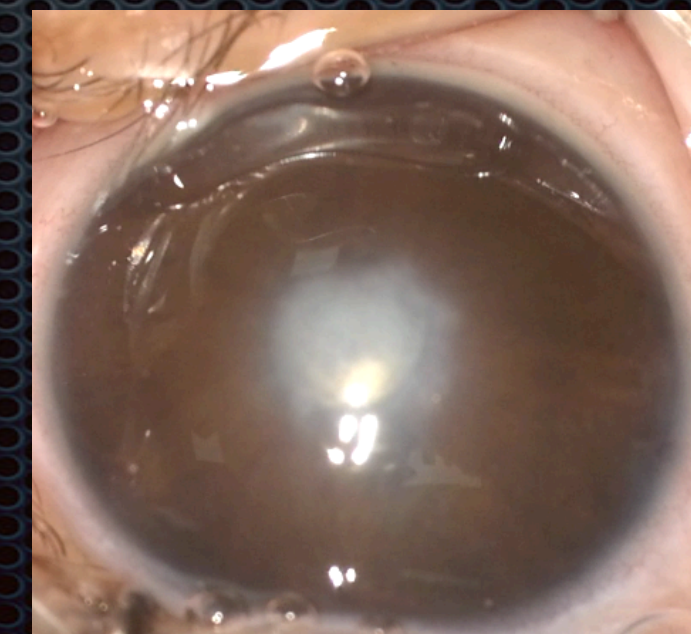
- The good (5A)



- The bad (5B)



- The ugly (5C)



- Open or closed (narrow) funnels or a combination of both
- Retinal folds could be twisted
- In posteriorly narrow funnels, thick vitreous condensations form a “central stalk” attached usually to the disc



Stage 5  
Open - Open



Stage 5  
Open - Narrow



Stage 5  
Narrow - Open



Stage 5  
Narrow - Narrow

Surgery

# Preoperative assessment

- ✦ Age
- ✦ Bilateral or unilateral
- ✦ Expectations of the parents
- ✦ Electrophysiology



01:03



Inf / IOP

40

mmHg

0.6

cc/min

Vacuum

0

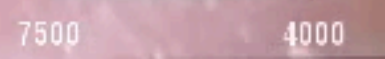
mmHg



Cut Rate

0

cpm



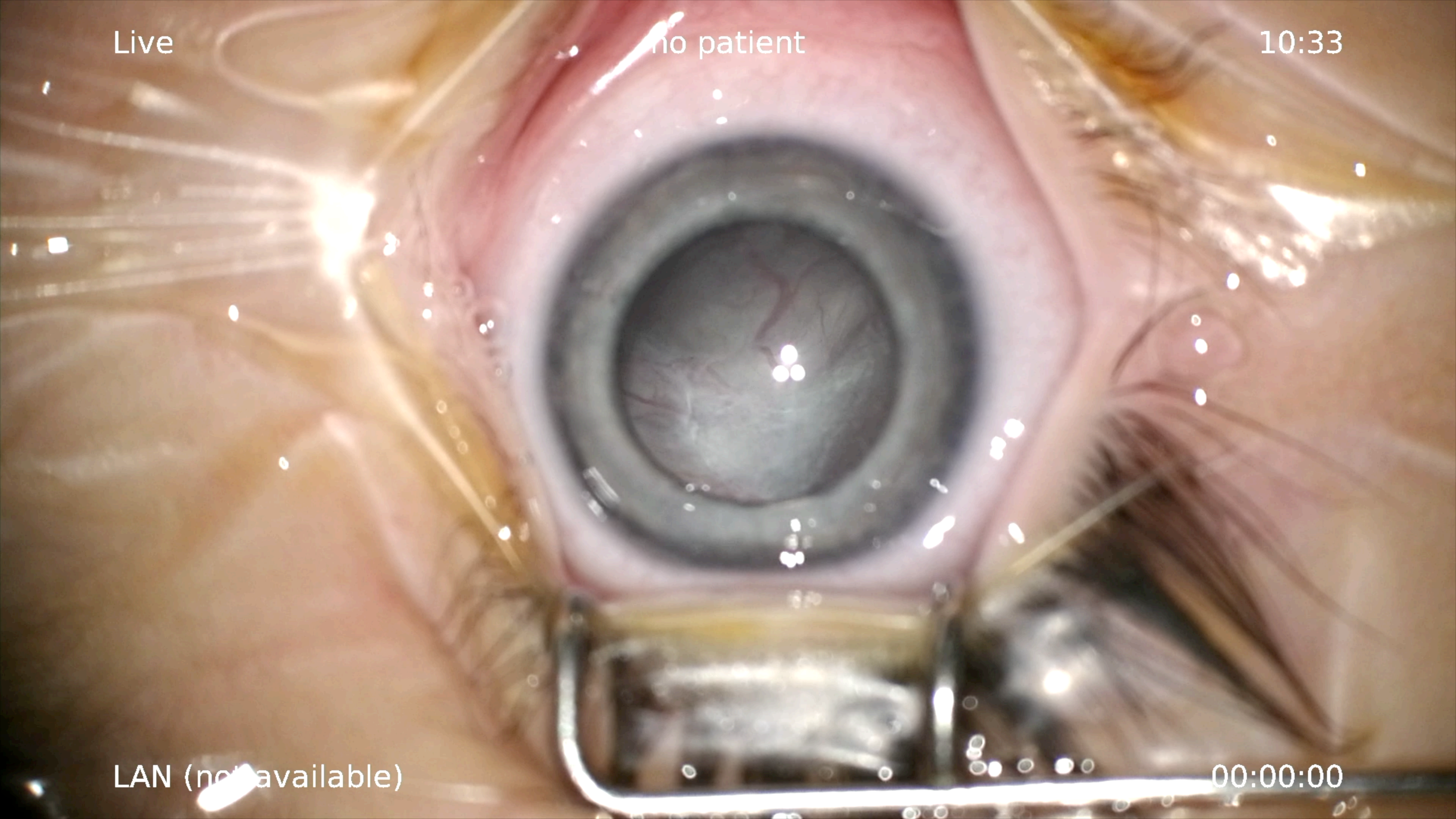
Cut Table

Core

Live

no patient

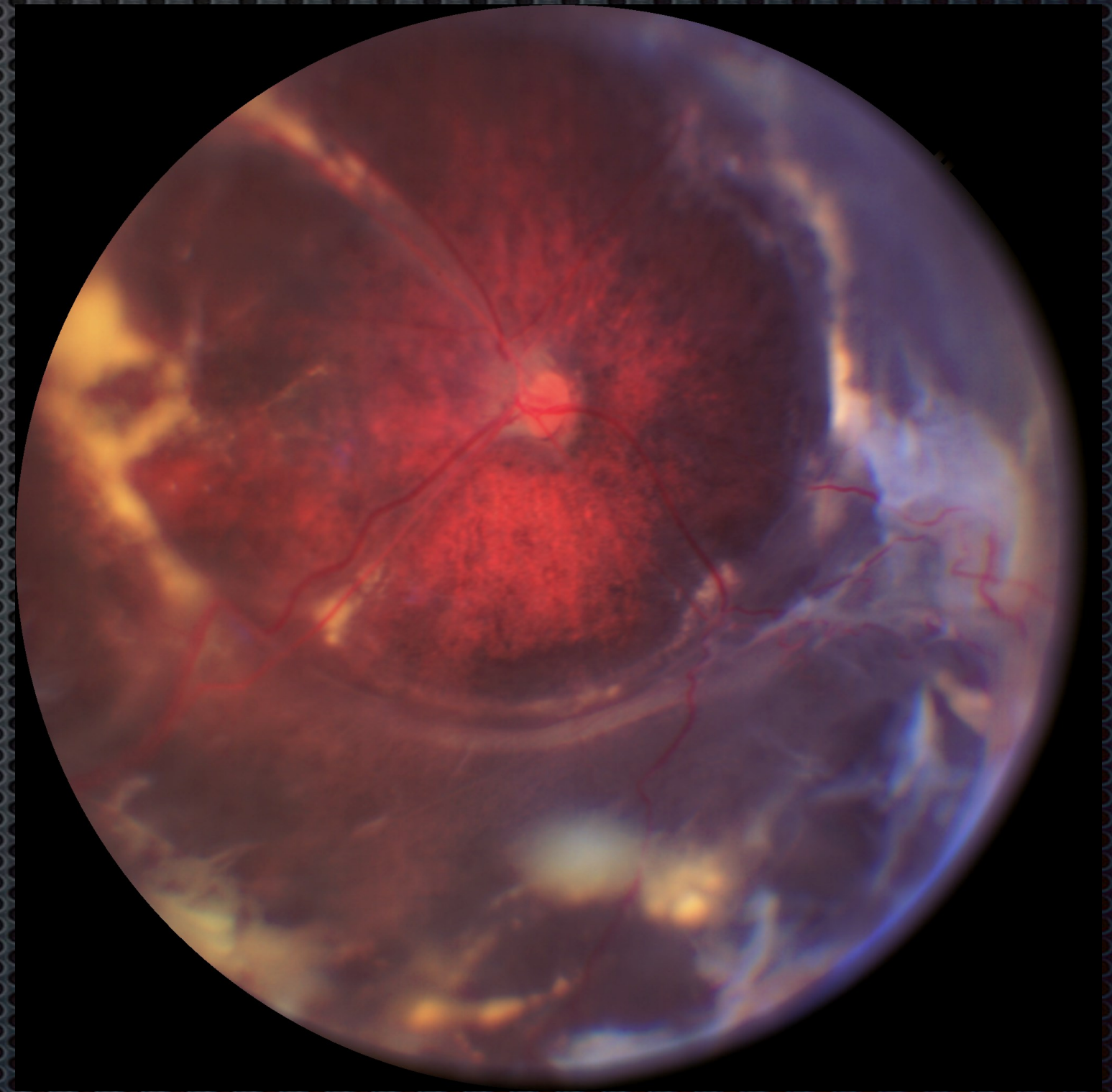
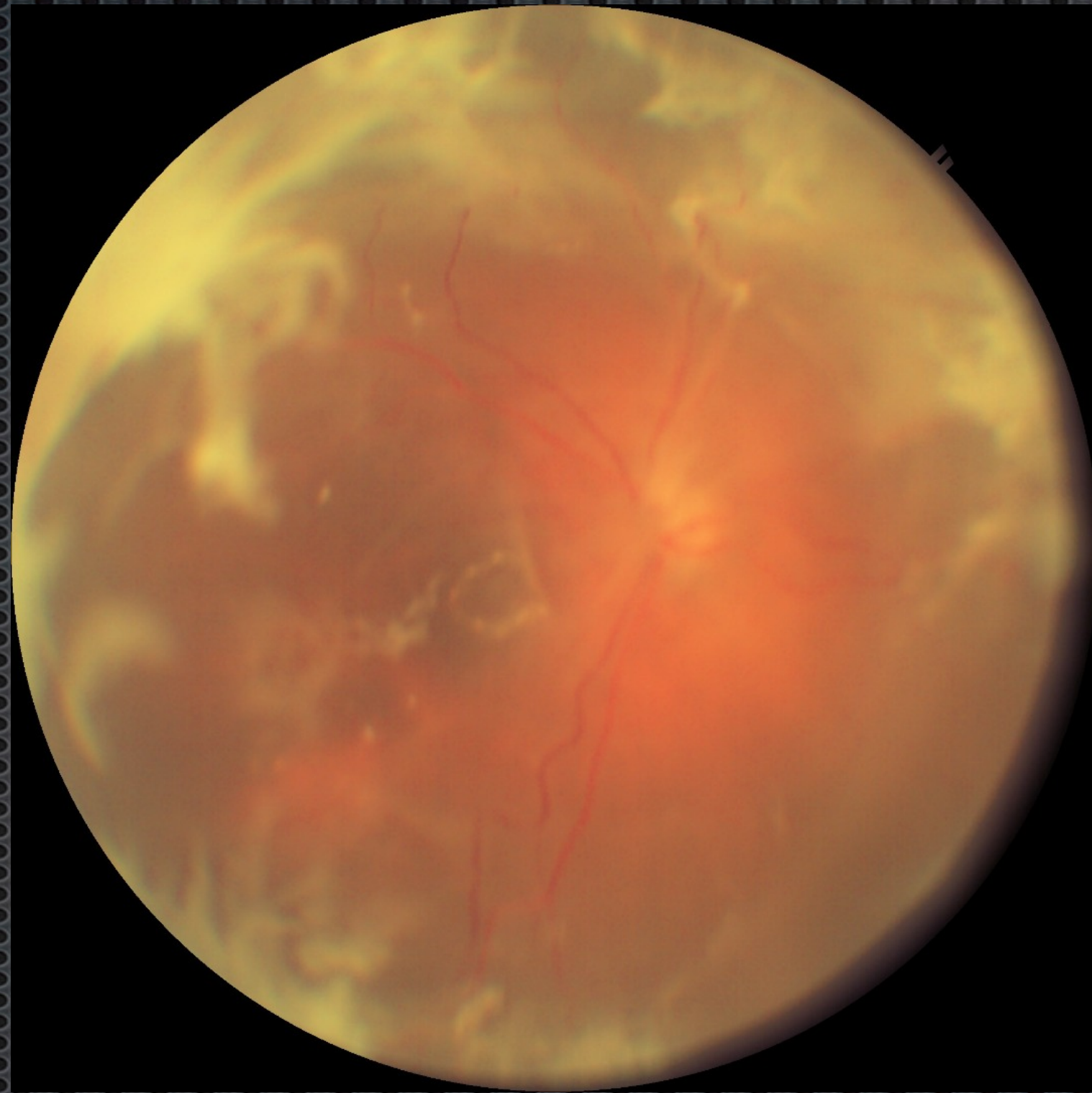
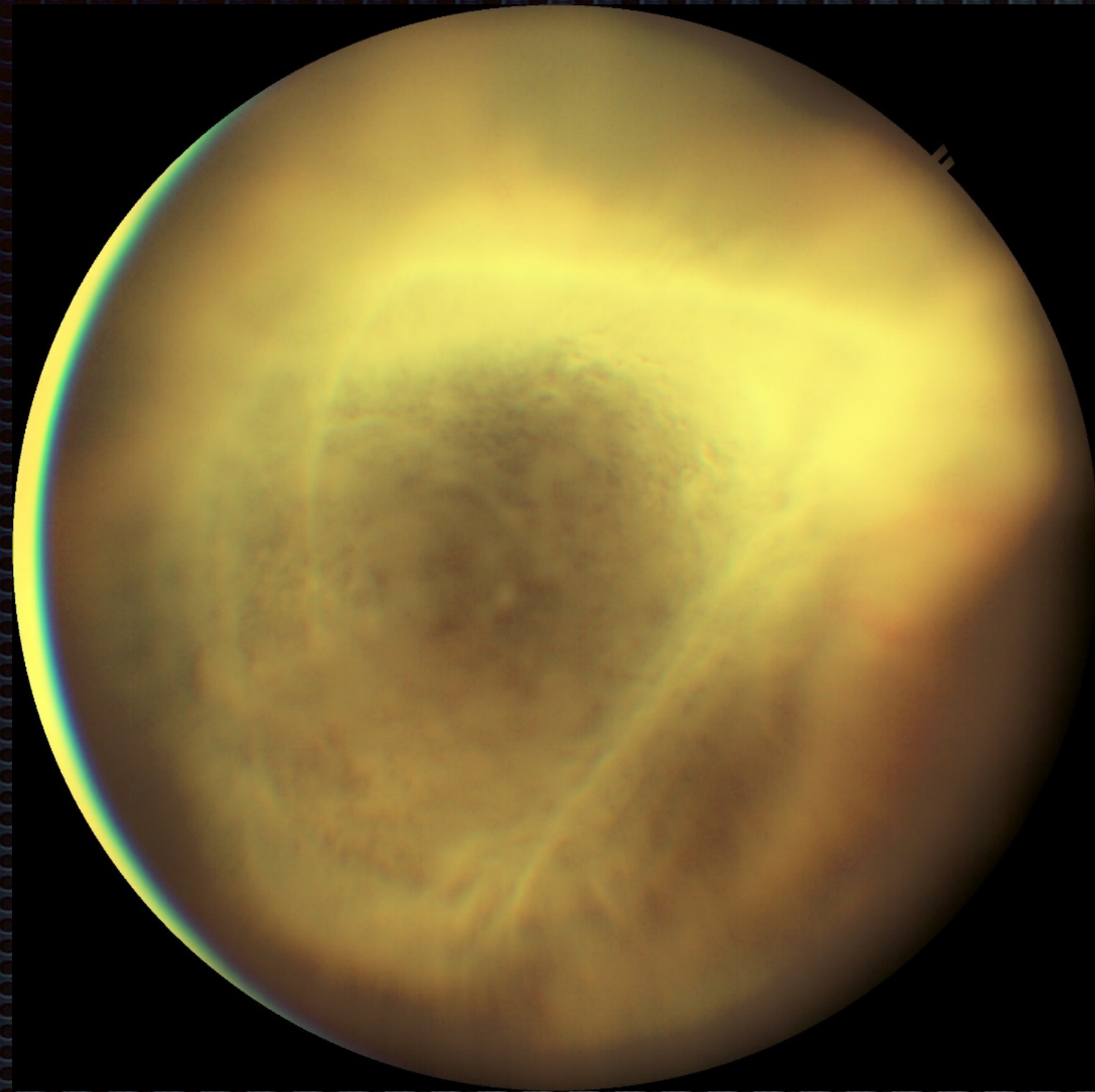
10:33



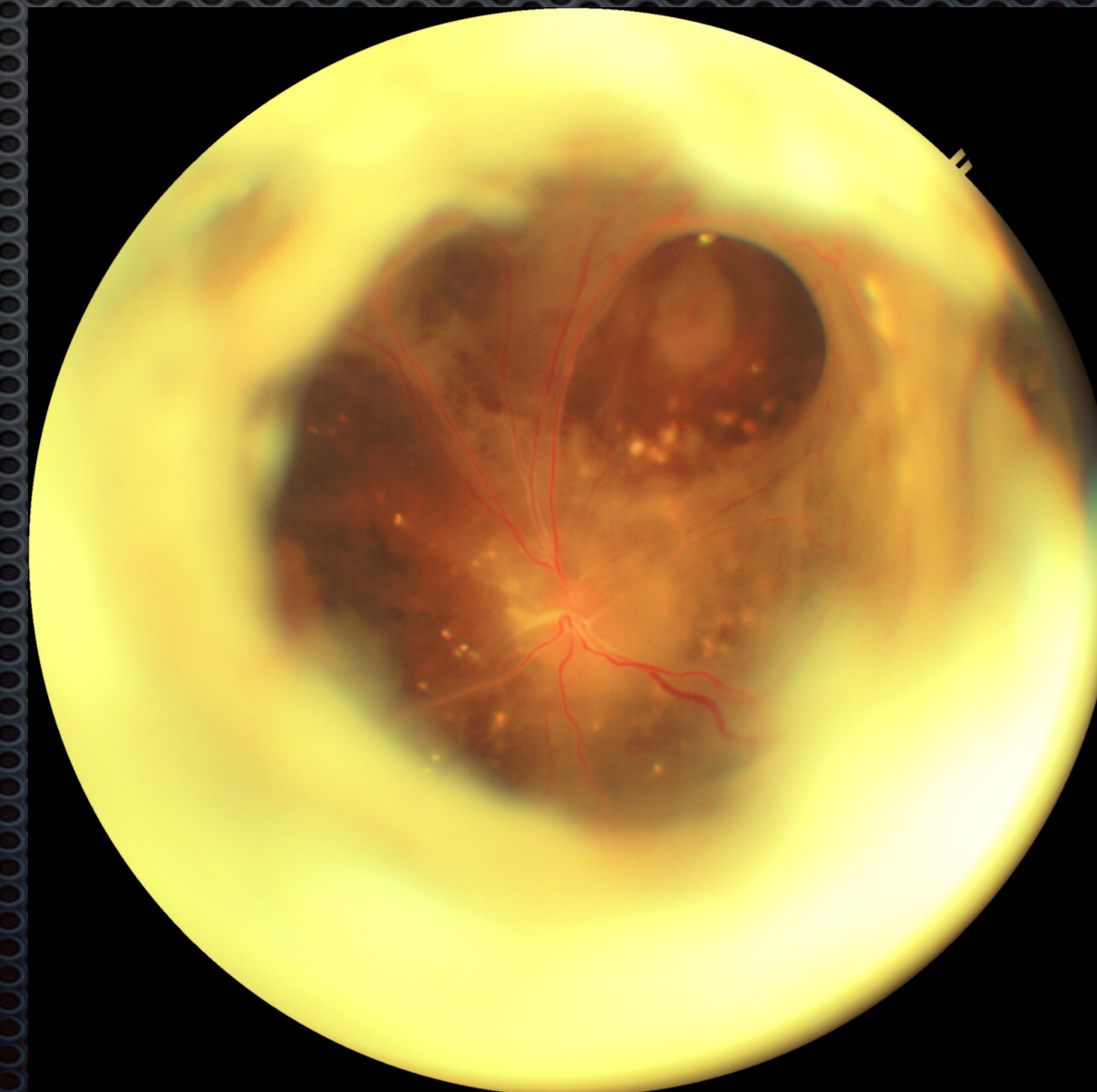
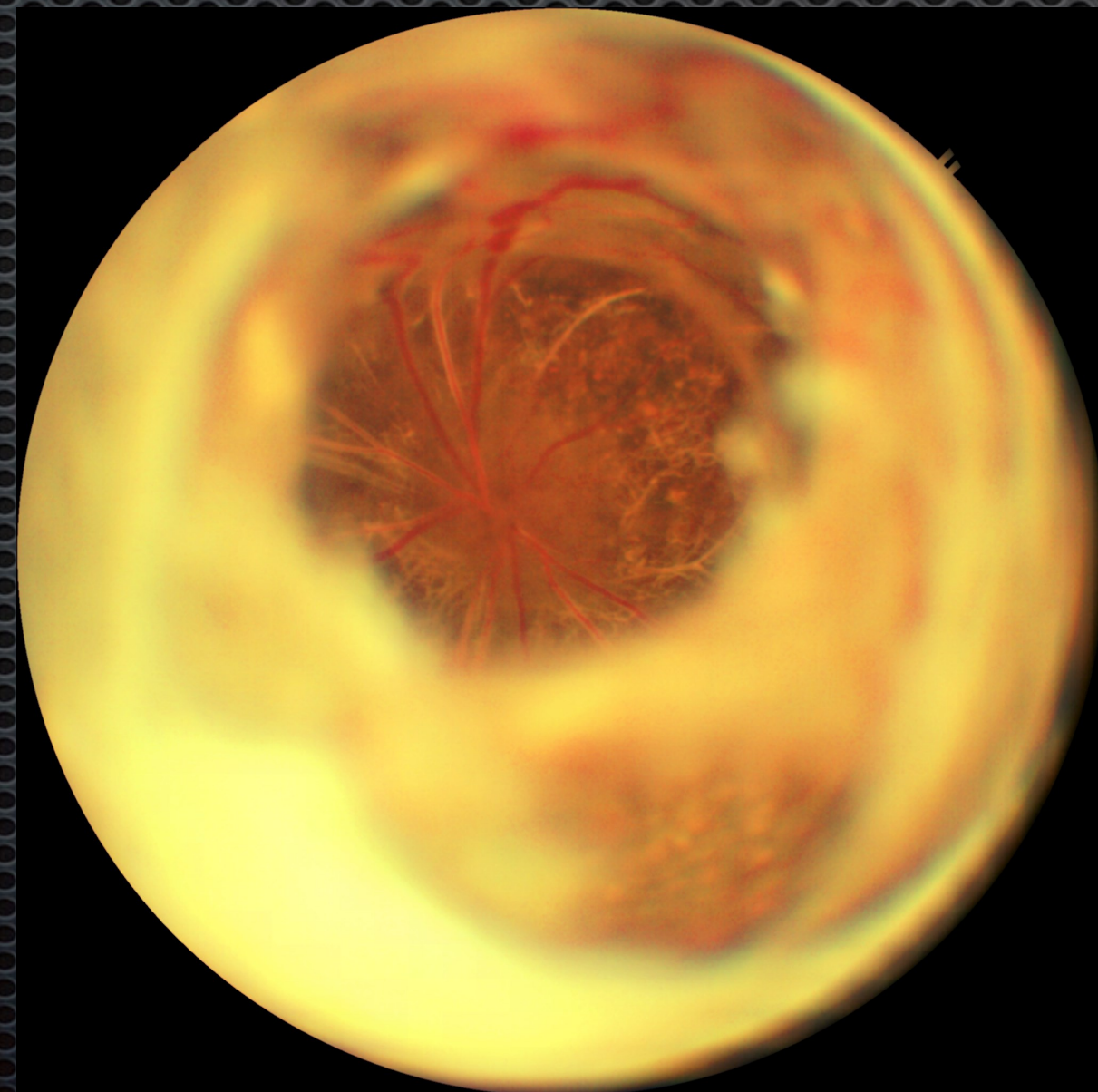
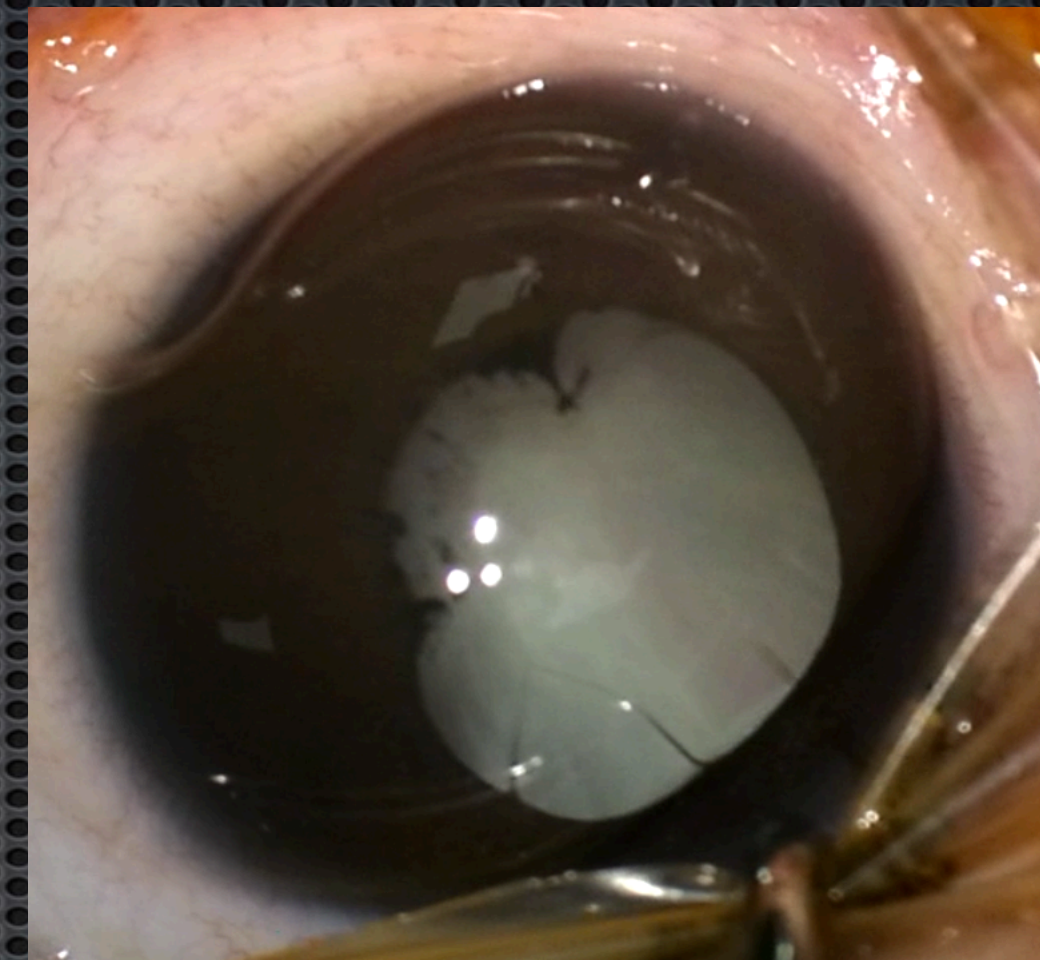
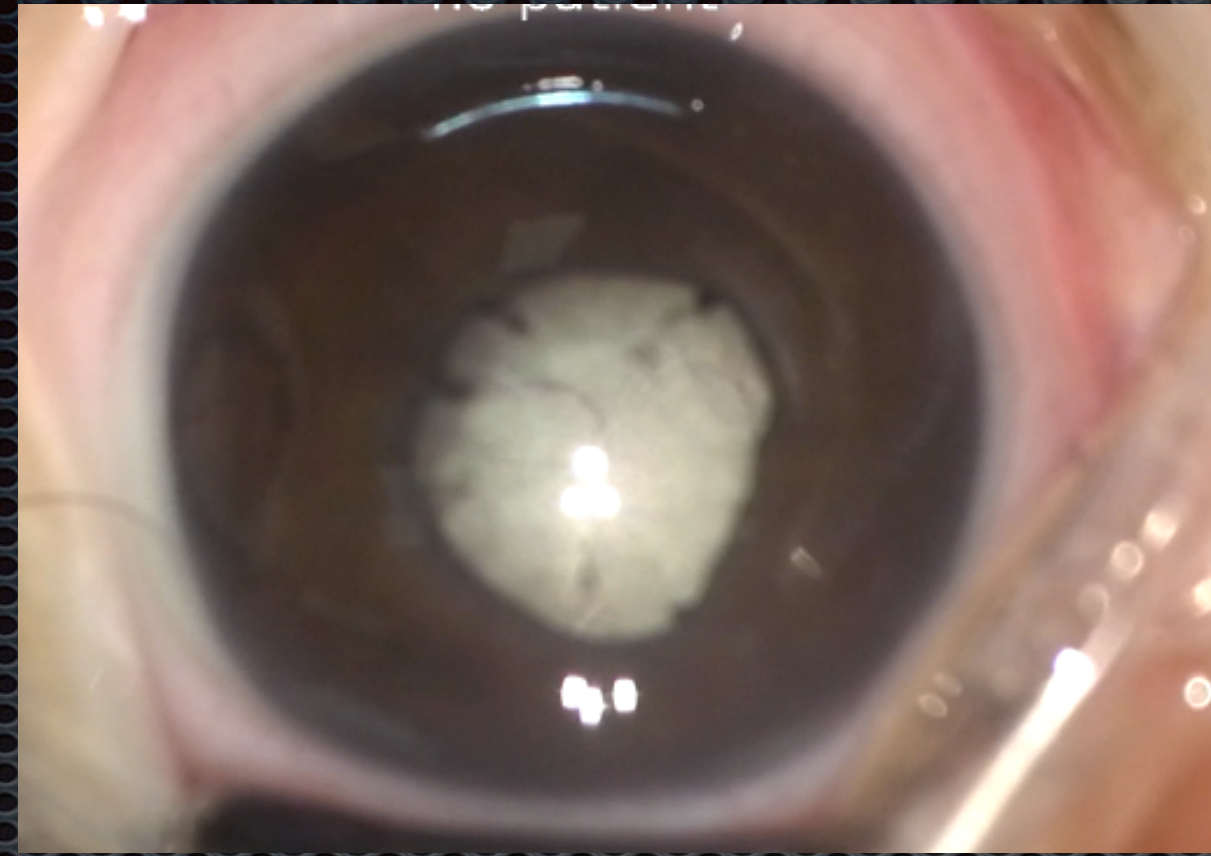
LAN (not available)

00:00:00

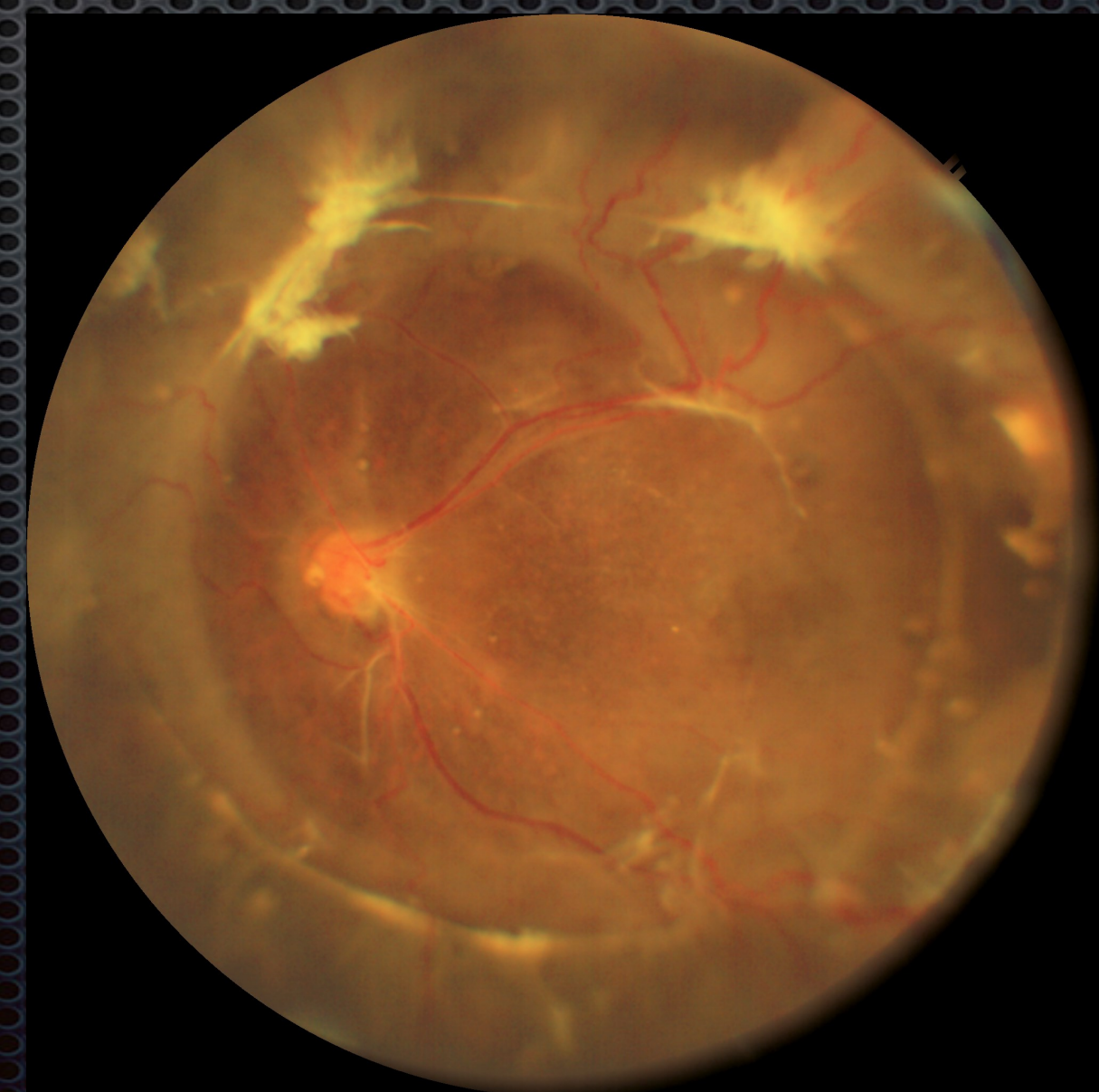
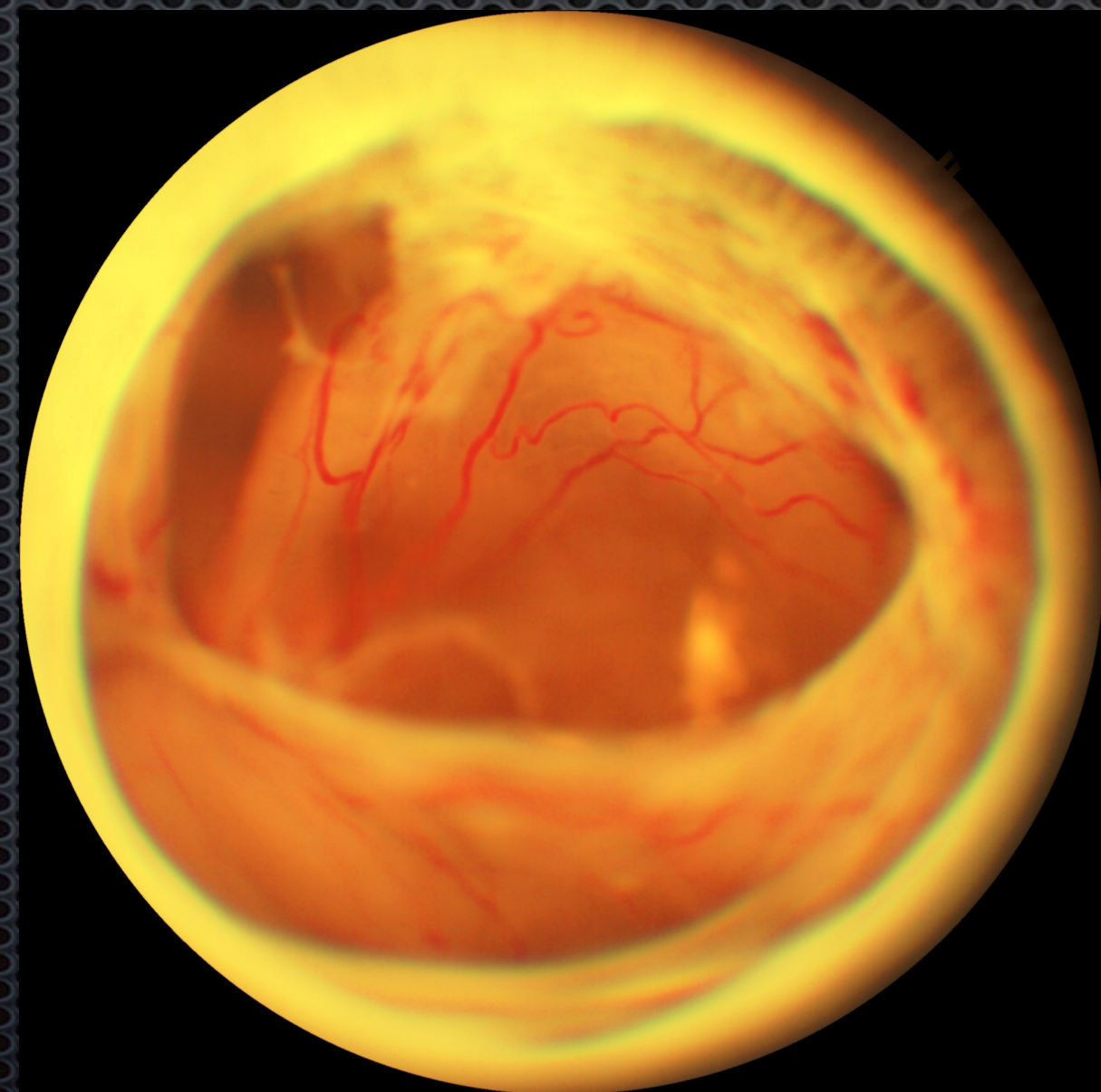
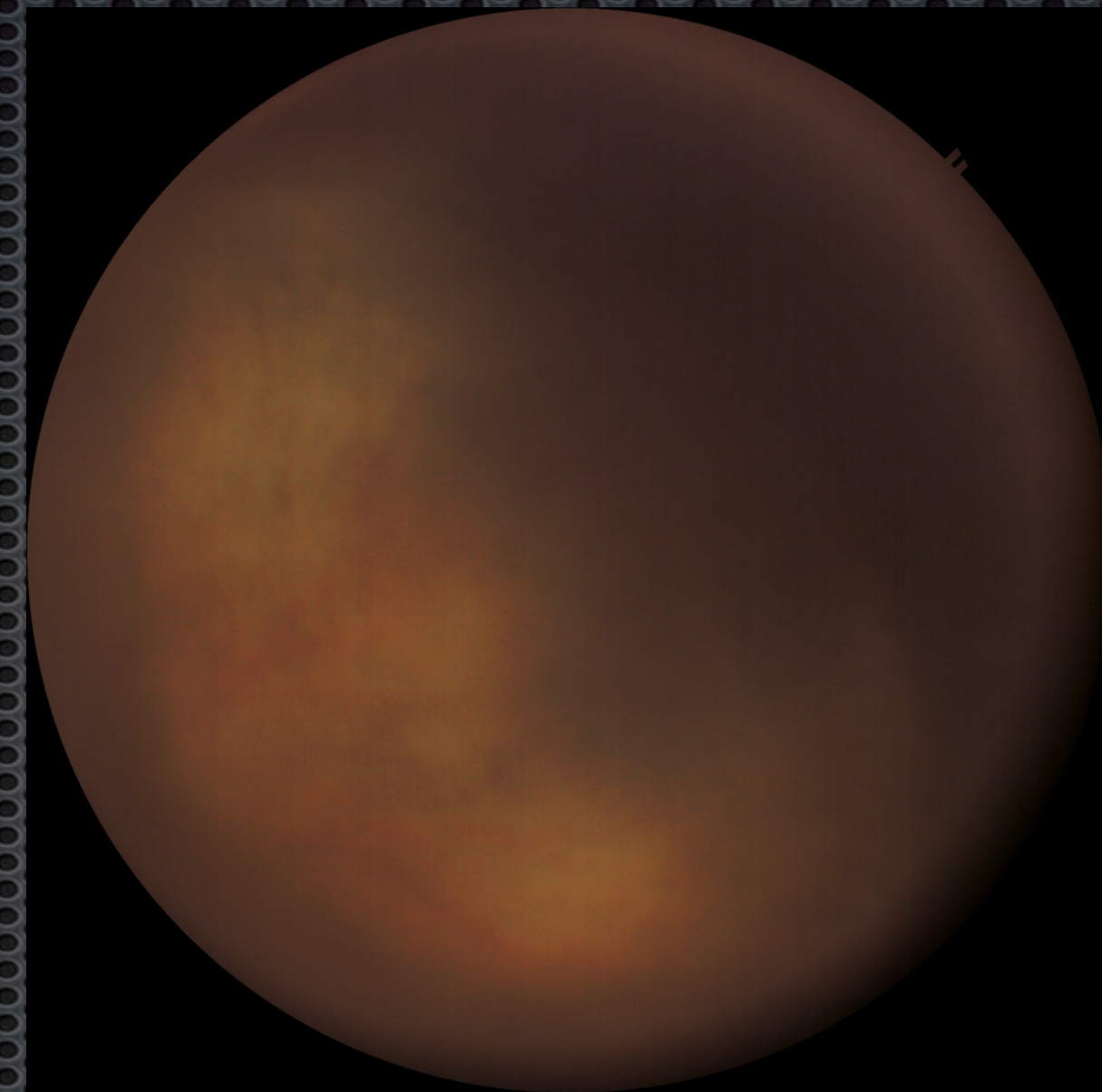
# Results



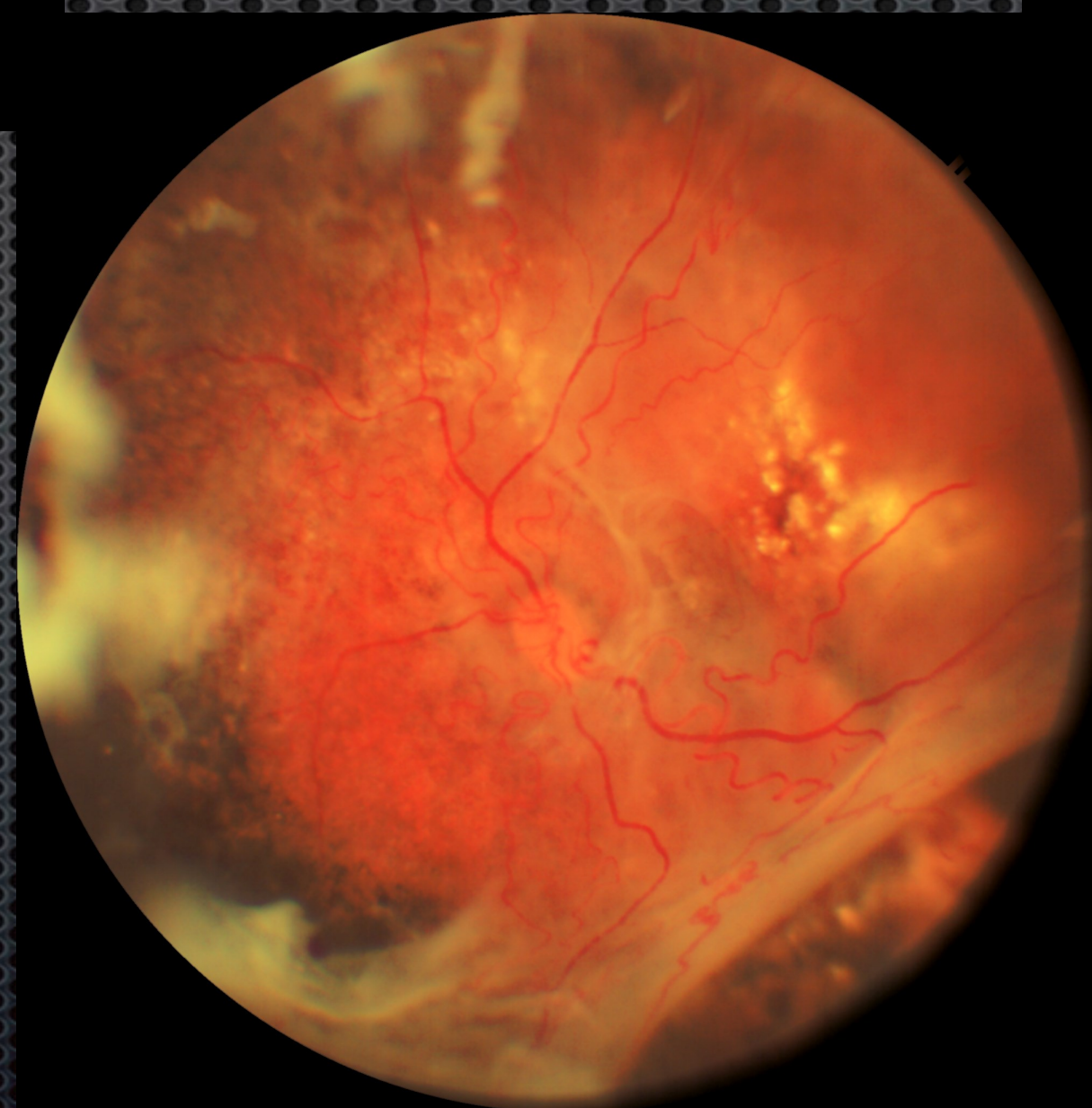
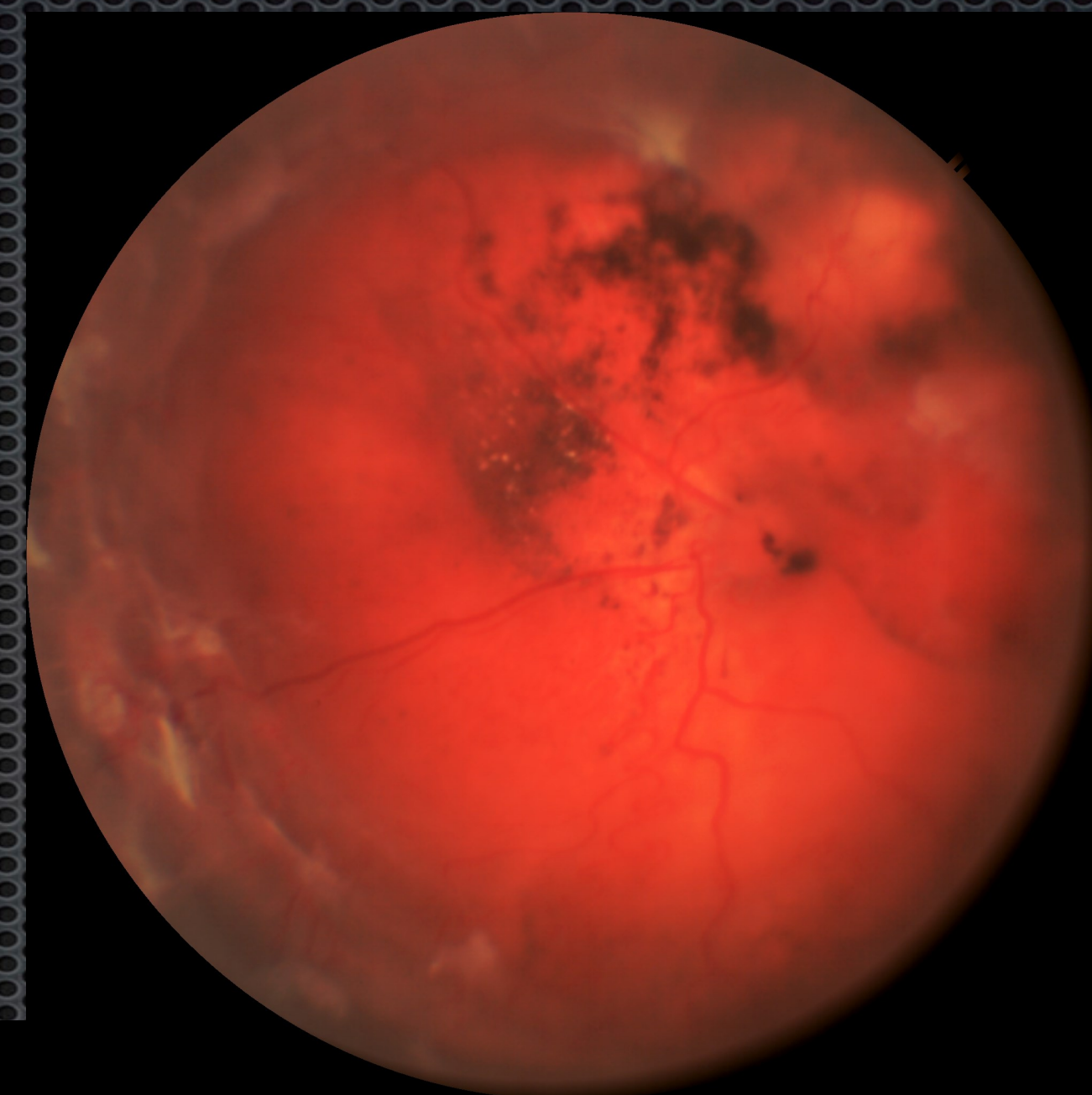
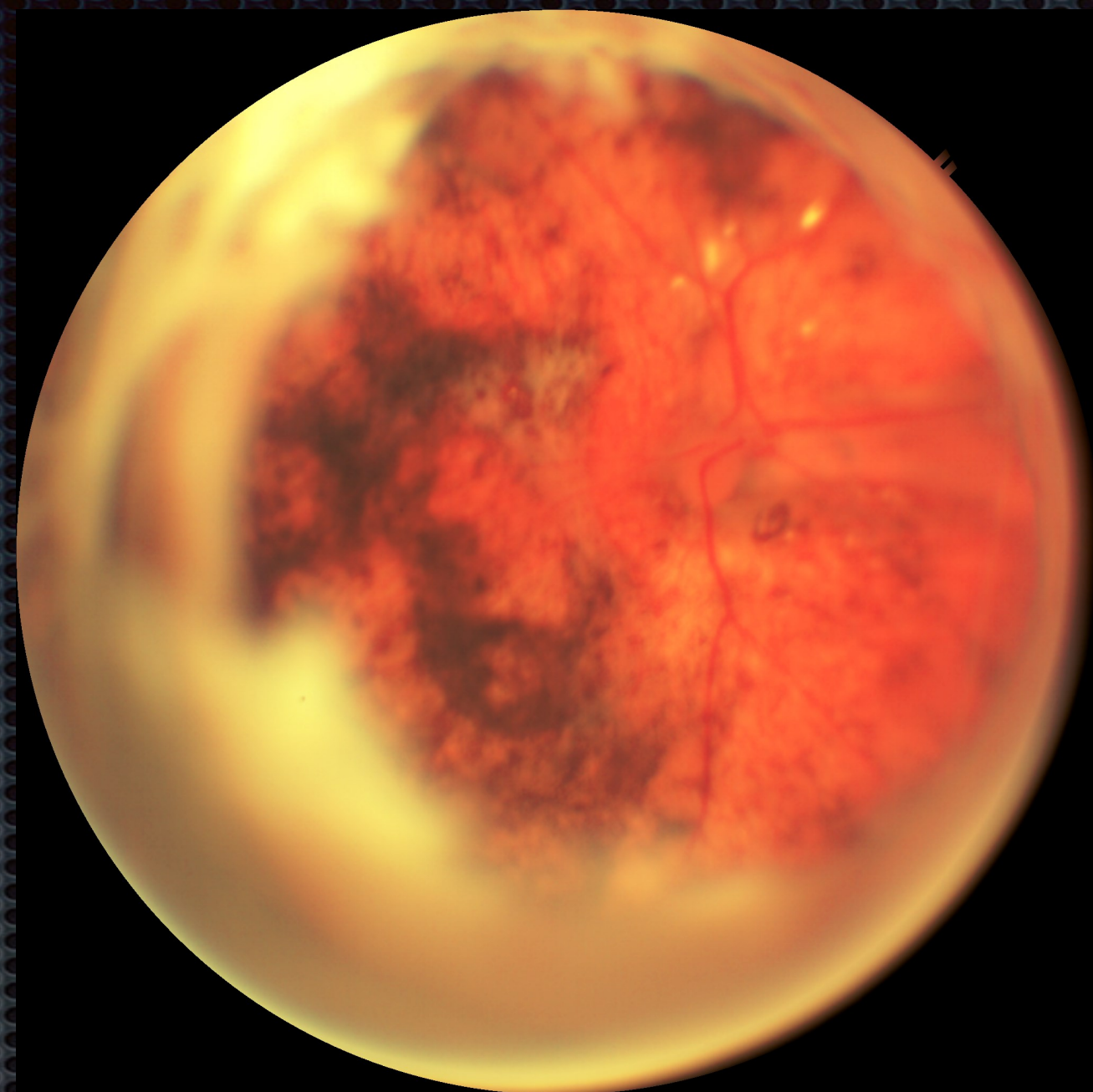
# Results



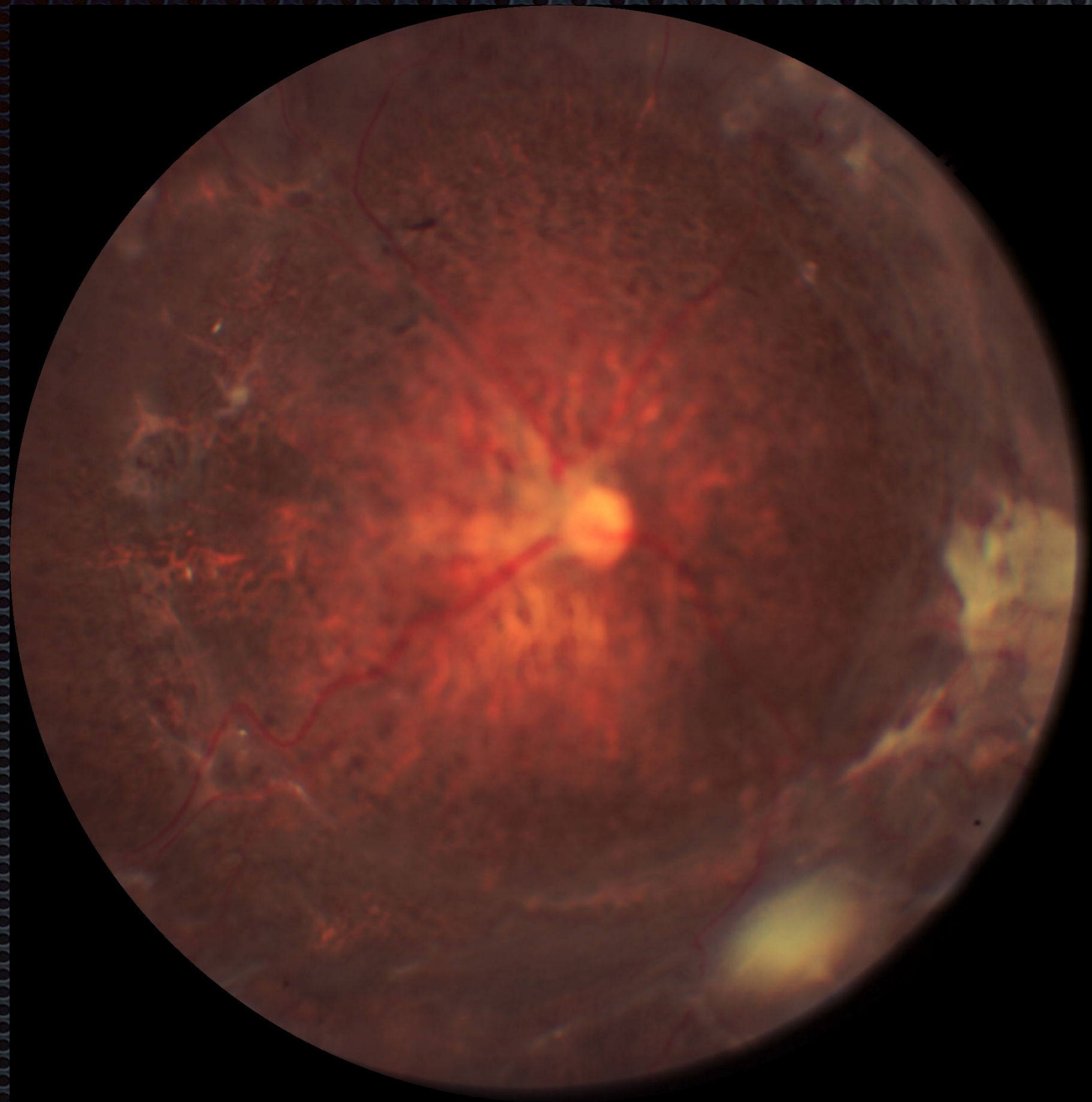
# Results



# Results



# Results



# Surgical Perspective

- Plan:

- Midperiphery - Center - Periphery... 2 forceps
- Peripheral folds (gutters) should be opened... indentation

- Instruments:

- Max grips, Shah forceps, Curved and straight scissors
- Illuminated pic

- Visualization:

- Ngenuity: better depth of focus, greater magnification, light gain manipulation, group opinions
- Light: Oblique illumination, chandelier
- Black HDL BIOM or RESIGHT lens from Oculus



Thank you