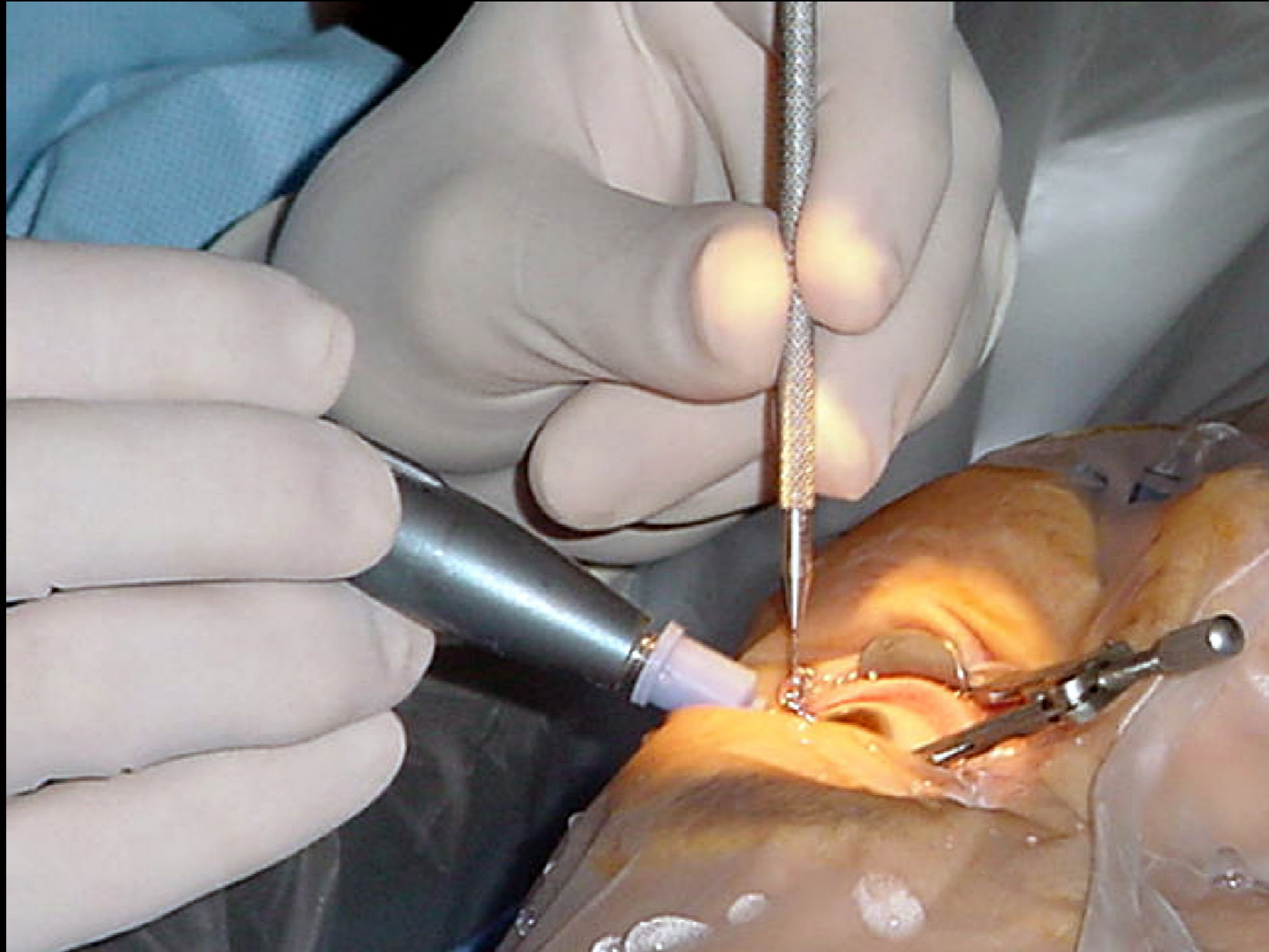




DROPPED IOLs

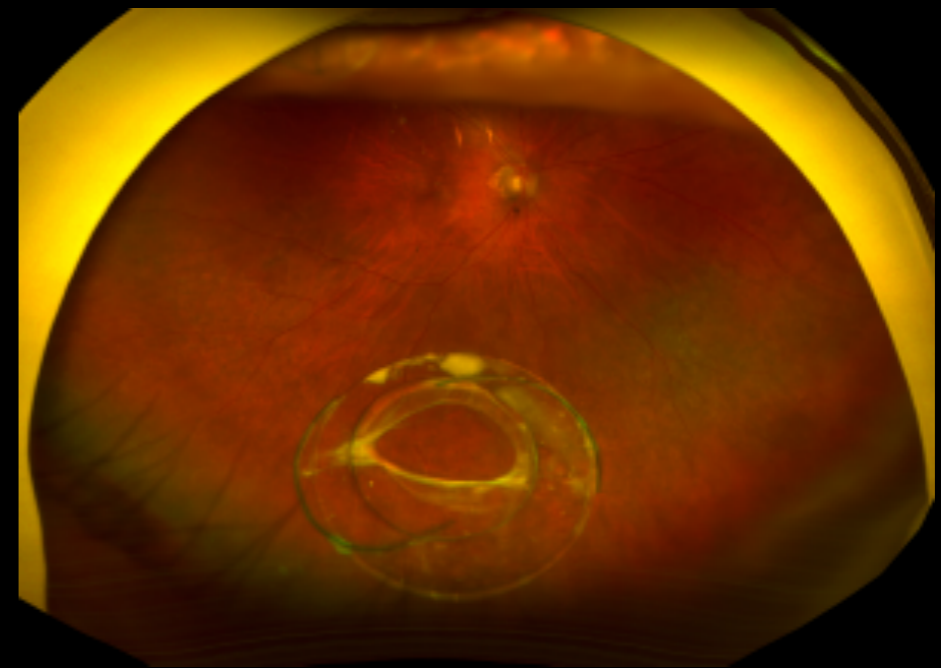
unexpected event

By:
Dr. Mostafa Mahmoud MD
Al Azhar University



- Cataract surgery is the most common operation performed by ophthalmologists.

- Although it has a very high success rate, certain complications may occur.
- Intraocular lens (IOL) malpositions range from simple IOL decentration to luxation into the posterior segment.



- Selection of treatment in the case of a decentered IOL should be based on the patient's symptoms, needs, and expectations.

Observation

- The IOL is not mobile.
- There are no retinal complications.
- The patient is satisfied with aphakic spectacle correction or contact lenses.

Surgical intervention

- The patient is not satisfied or cannot tolerate aphakic spectacle correction or contact lenses
- There is concomitant retinal pathology
- Inflammation

Risk-to-benefit ratio

- Severity, duration, and chronology of the problem
- Response to nonsurgical treatment
- Ease of surgical removal and potential for aggravating or creating additional complications

Risk-to-benefit ratio

- Status of the other eye
- Life expectancy and overall health of the patient

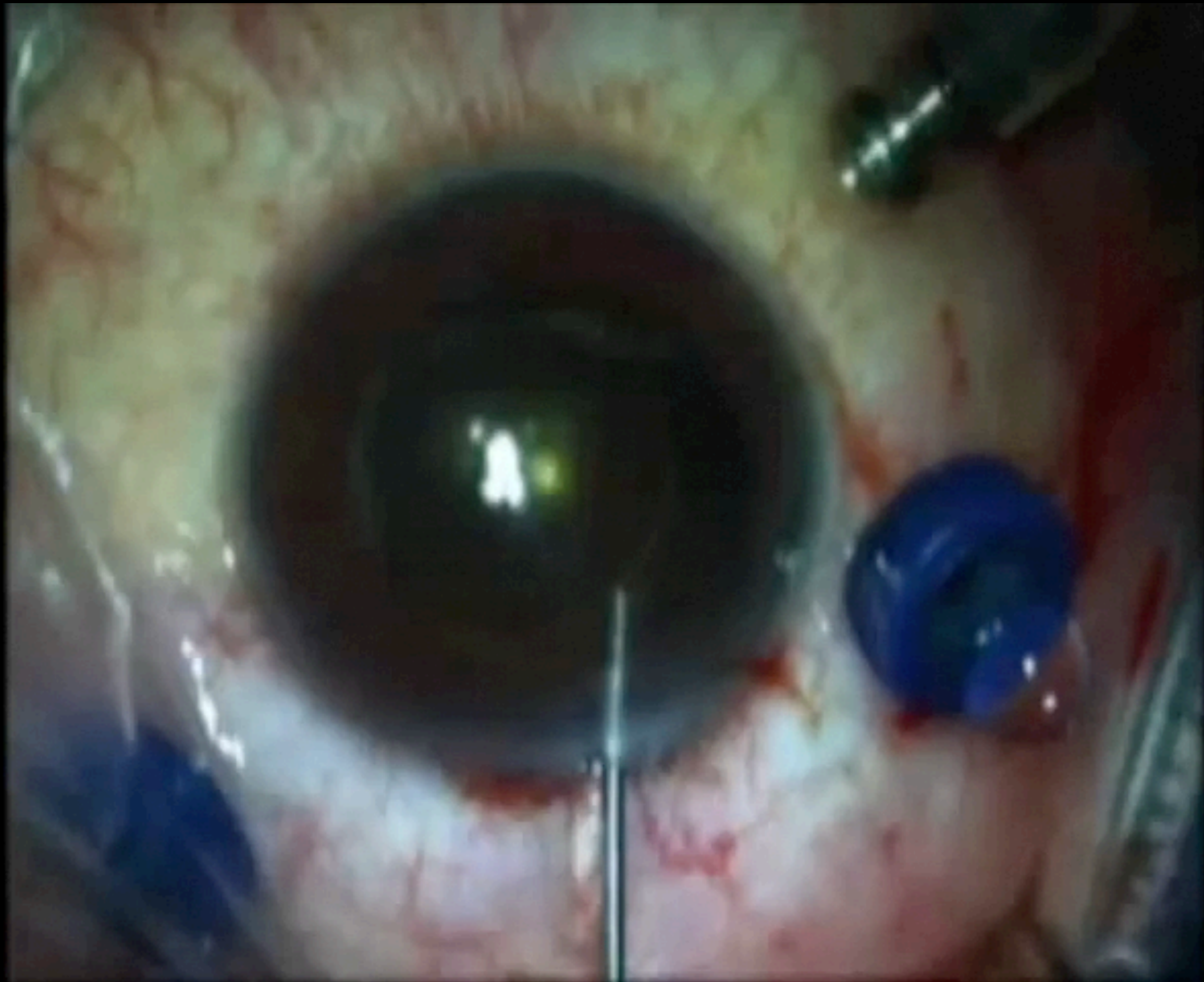
Unexpected events

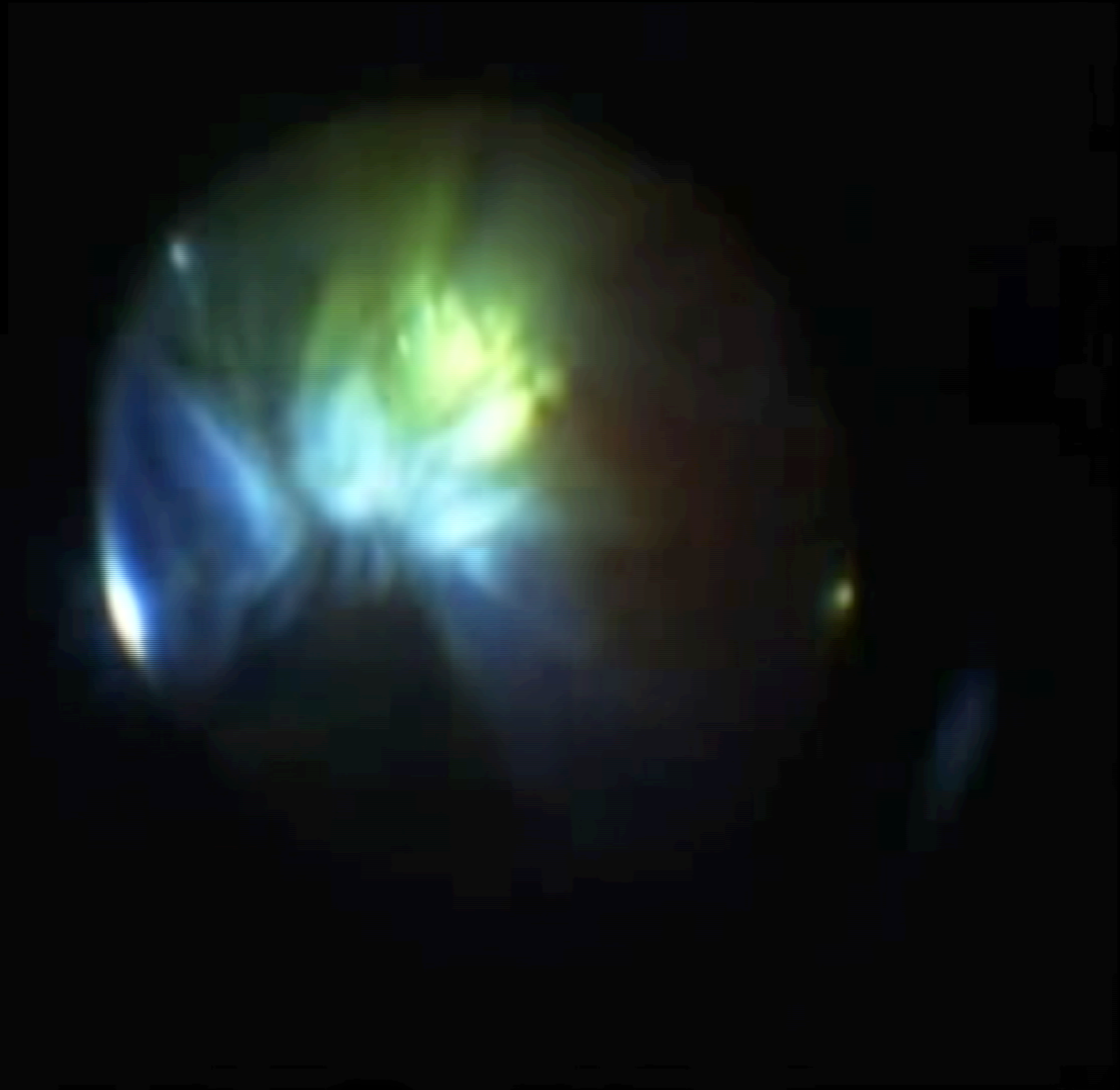
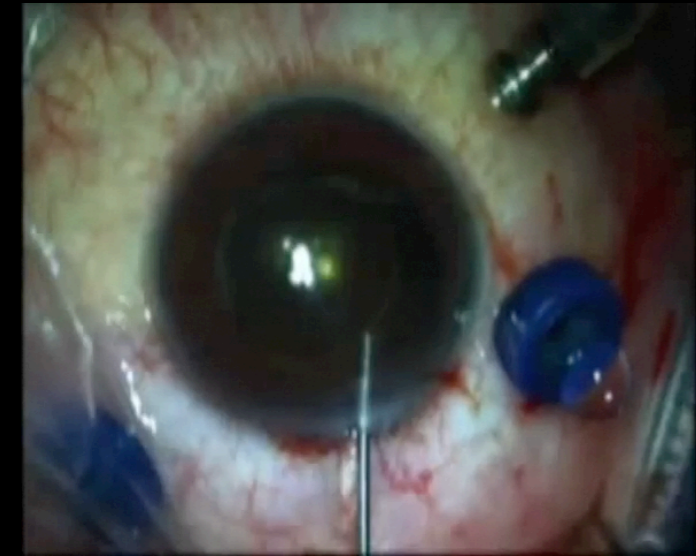


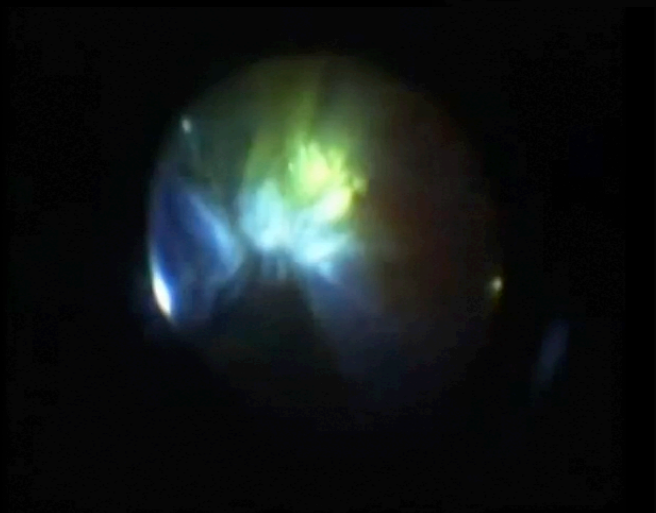
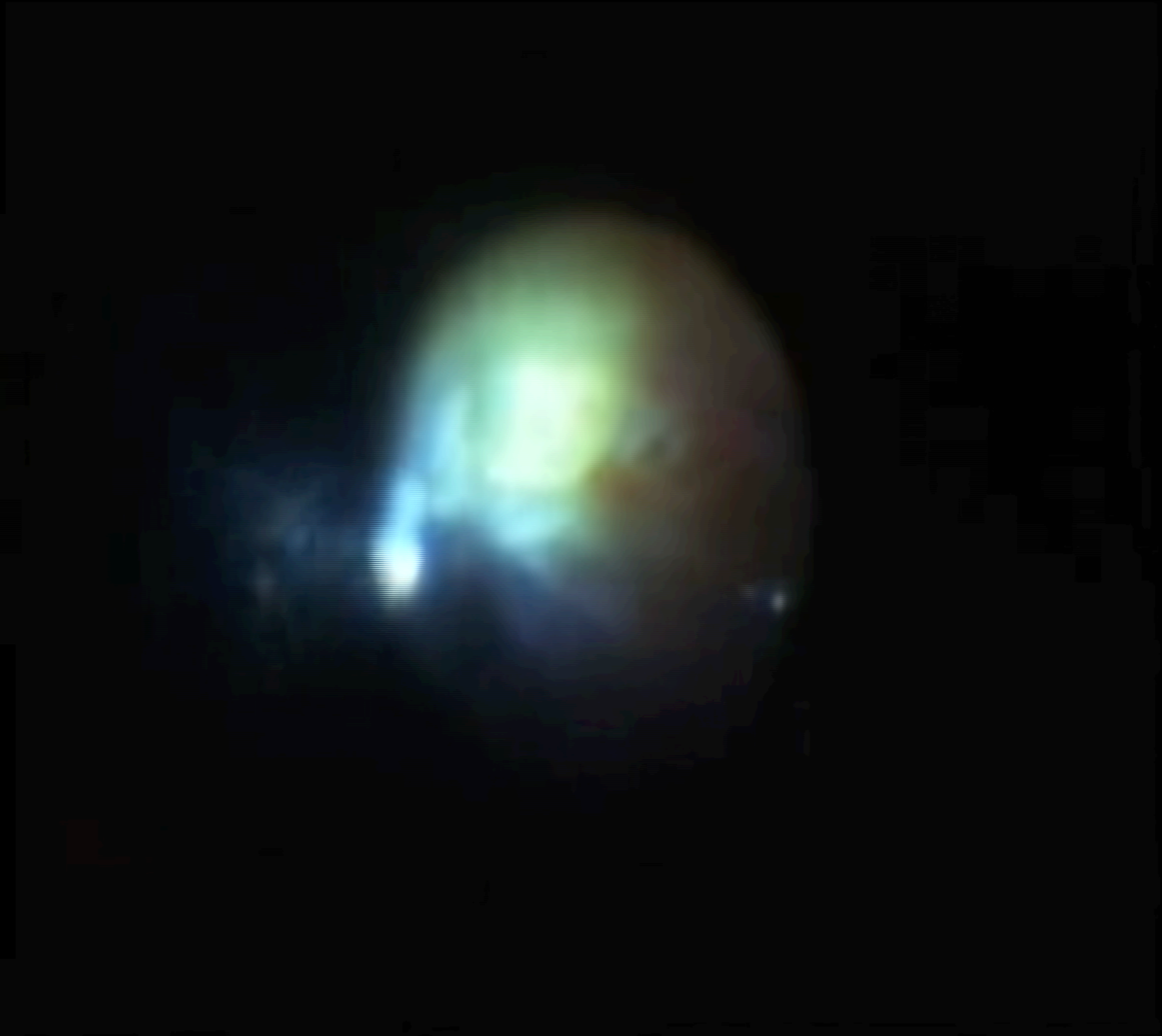
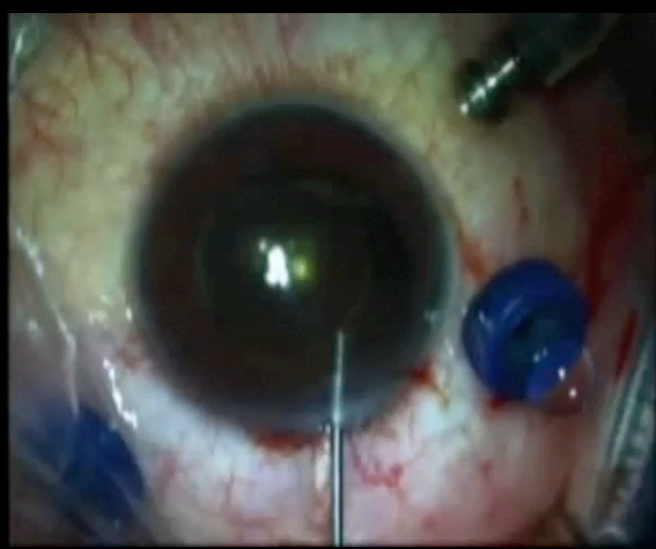
- No one can expect what we will find and
Specialty of eye surgery is kind of advanced and complicated
Full of patients with various eye diseases
Anterior segment surgery

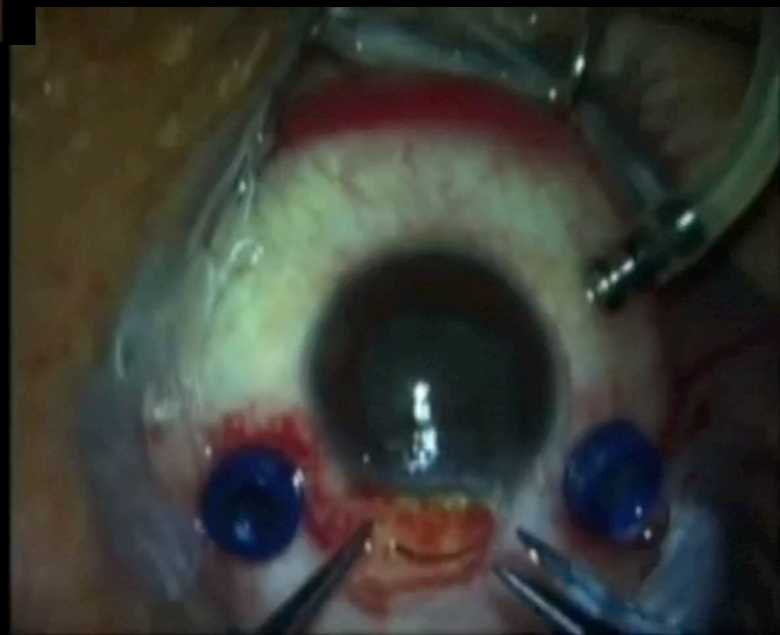
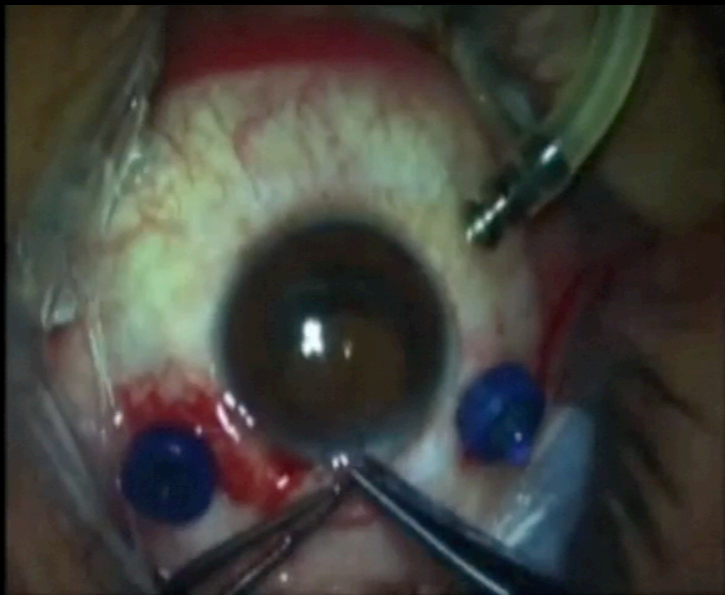
Cataract extraction and IOL implantation 3 months ago
History of perforating myopia injury due to explosion of
a car battery followed by 1ry repair 4 months ago

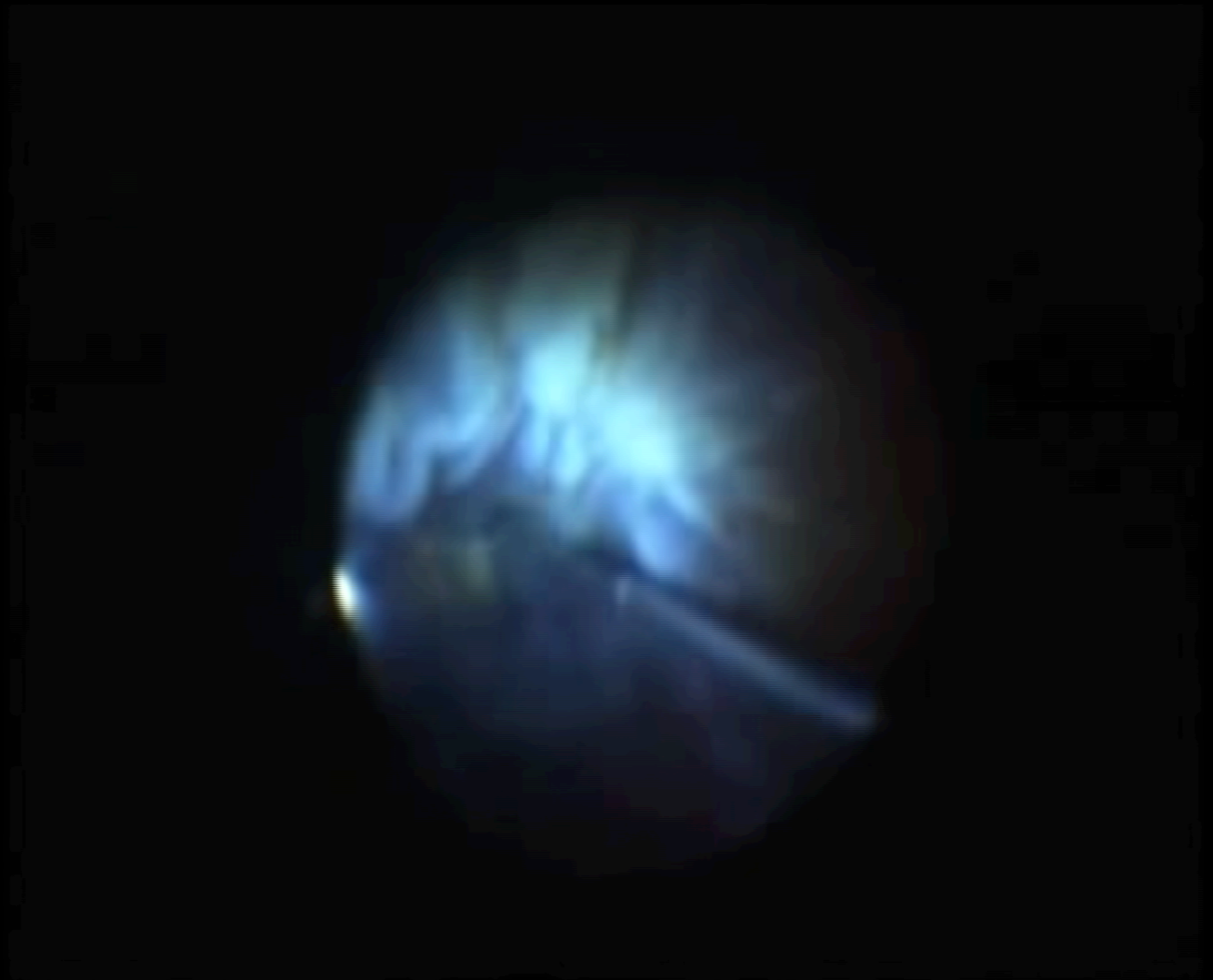
On examination
Elevated JVP (35mm/hg) with total PD
The 6 shows a typical beam and color flow with total displacement
The 6 shows a typical beam and color flow with total displacement
VA----- PL











Posterior segment surgery after
Always full of the unexpected
complicated anterior segment surgery

