

Simplified Conjunctivorhinostomy with Mitaireau tube

*Mohamed AlTaher, FRCS, MD
Ass. Prof. of Ophthalmology
ALAzhar University*

Financial disclosure

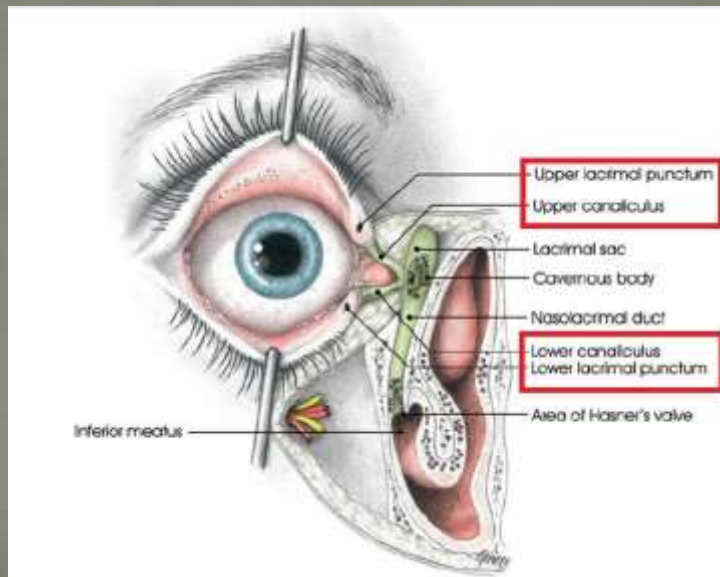
No financial interest

Anatomy :

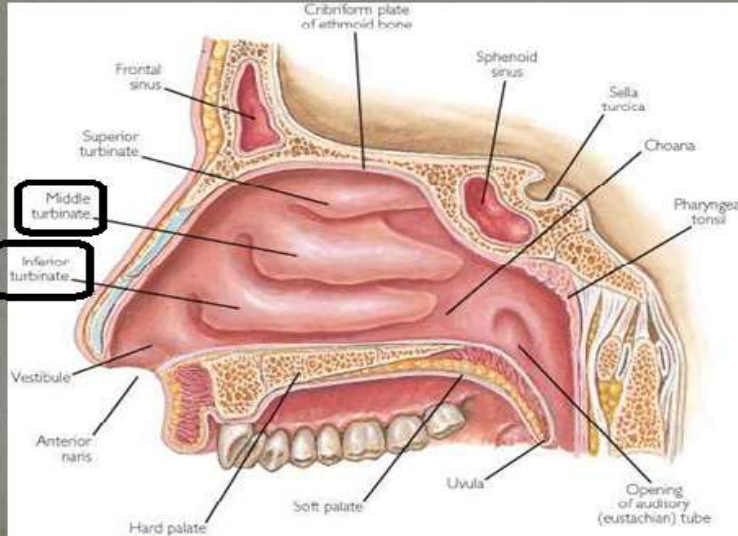
1-Lacrimal Drainage system

2- Nasal Cavity

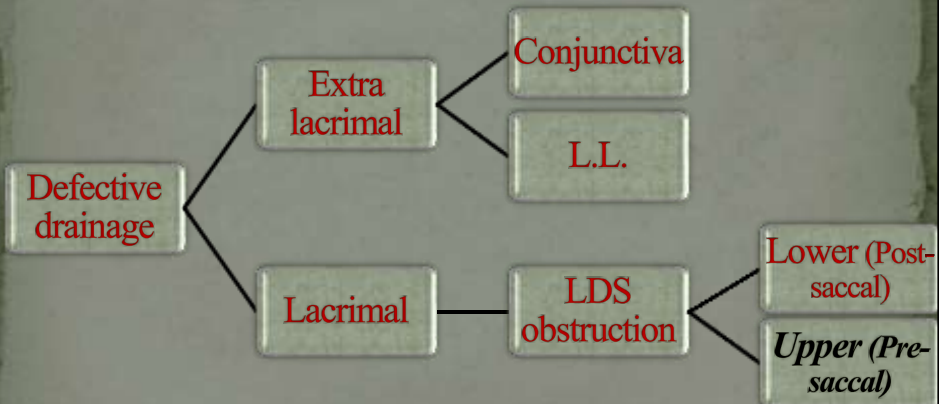
1-Lacrimal Drainage System



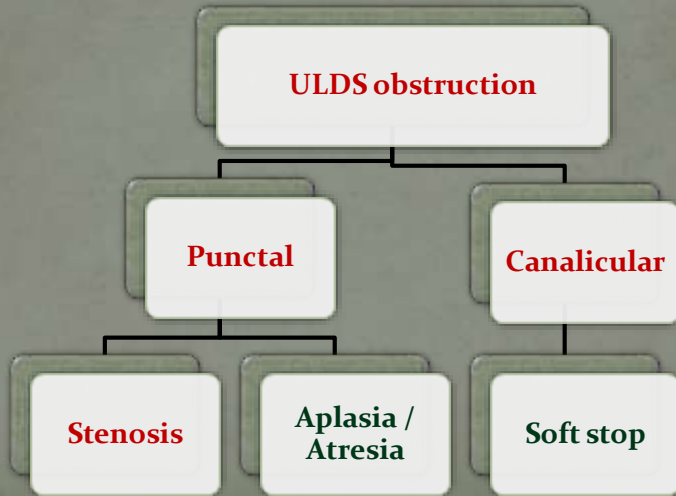
2- Nasal Cavity



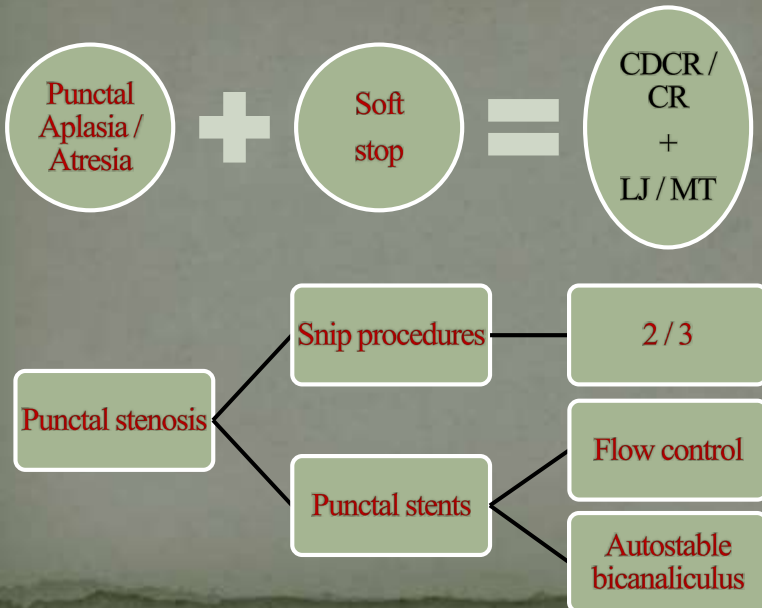
Epiphora



Upper lacrimal drainage system (ULDS) obstruction



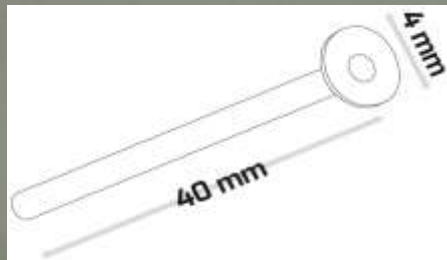
Management plan of ULDS obstruction



Simplified CR:

Tools?

- 1- Large caliber IV cannula (16/ 14 G)
- 2- Special CDCR / CR tubes (Metaireau)



Simplified CDCR:

Gun and missile?

Colour Code	Gauge	Ext. dia. (mm)	Length (mm)	Flow rate ML ₁ /min
Orange	G-14	2.1	45	300
Grey	G-16	1.7	45	172
Green	G-18	1.3	45	76
Pink	G-20	1.0	33	54
Blue	G-22	0.8	25	31
Lime	G-24	0.7	19	14

Cannula size color code



Simplified CDCR:

where to begin?

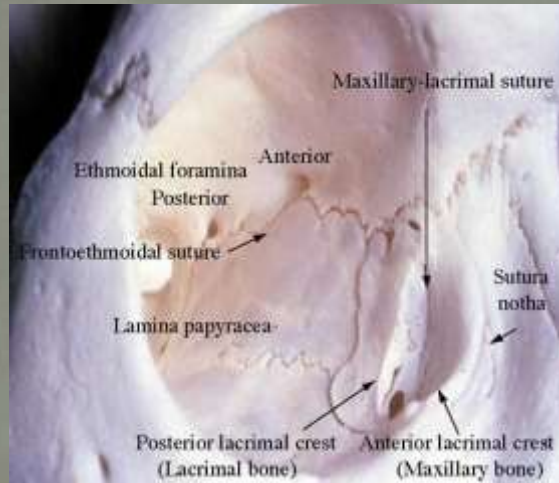


Simplified CDCR:

what to do externally?



It's crucial to know where to dig before you dig



Simplified CDCR:
what's going on in the nose?



Simplified CDCR:

How to load the tube?



Simplified CDCR:

How to insert the tube?



Simplified CDCR:

How to insert the tube?



Simplified CDCR:

How to secure the tube?



Simplified CDCR:

Is the tube functioning?



Simplified CDCR:

How to self clean the tube?





Thank you