

Phacoemulsification in Hard Cataract

By

Hisham Adel, M.D.

Professor of Ophthalmology
Cairo University

2018

* Hard Nucleus Triad

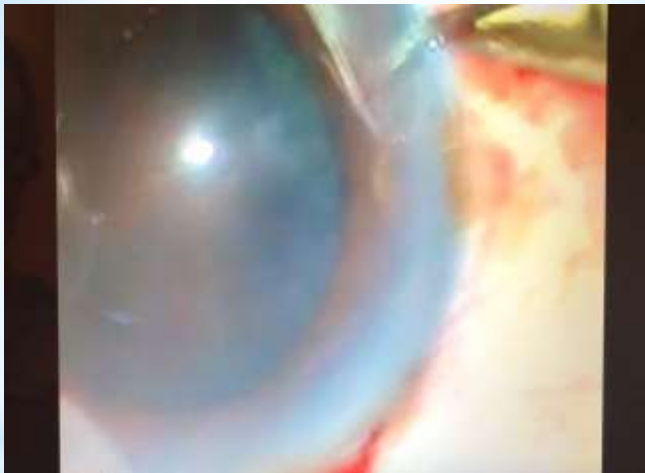
**Miotic pupil

**Zonular Laxity

**Hard nucleus with no red
reflex

*Intra-operative challenges

- *Prolonged surgical time
- *Phaco burns
- *Endothelial cell loss
- *Posterior Capsular rupture





*Phacodynamics

*Flow rate	45
*Vacuum	450
*High Power	Pulsed

* MILESTONES

- * Wide capsulorhexis
- * Complete nucleus cracking
- * Methyl cellulose

Be Backed

- * Iris retractor
- * Capsular dye
- * Capsular tension ring

Keen Surgeon

+

Hard Nucleus

=

HAPPY END